

---

---

# SkyMedia-200

Version 2.0

## Installation Instructions

---

---



# Table of Contents

<b>1. UNPACKING THE SKYMEDIA-200 BOX.....</b>	<b>3</b>
<b>2. DOWNLOADING THE LATEST INSTALLATION SOFTWARE FROM WEB-SITE.....</b>	<b>4</b>
<b>3. CLEAN UP EXISTING SKYMEDIA-200 DEVICE DRIVER AND SOFTWARE.....</b>	<b>5</b>
3-1 WINDOWS 95/98.....	5
3-2 WINDOWS NT.....	8
<b>4. HARDWARE INSTALLATION.....</b>	<b>11</b>
<b>5. DRIVER INSTALLATION.....</b>	<b>15</b>
5-1 WINDOWS 95.....	15
5-2 WINDOWS 98.....	19
5-3 WINDOWS NT.....	23
<b>6. DRIVER INSTALLATION VERIFICATION .....</b>	<b>27</b>
6-1 WINDOWS 95/98.....	27
6-2 WINDOWS NT .....	28
<b>7. SOFTWARE INSTALLATION .....</b>	<b>29</b>
7-1 WINDOWS 95/98.....	29
7-2 WINDOWS NT .....	29
<b>8. TROUBLE SHOOTING OF INSTALLATION.....</b>	<b>30</b>
8-1 WINDOWS 95/98 .....	30
8-2 WINDOWS NT .....	33
<b>9. QUICK TROUBLE SHOOTING FOR SKYMEDIA-200 .....</b>	<b>34</b>

# 1. Unpacking the SkyMedia-200 box

As shown in Fig. 1, the following items come with your SkyMedia-200:

- SkyMedia-200 card
- Installation CD
- User's manual
- Remote controller (Optional)
- Two batteries of AAA size for Remote controller (Optional)
- Smart card reader & Remote sensor (Optional)
- Sound card connection cable
- VGA card connection cable
- A/V RCA cable

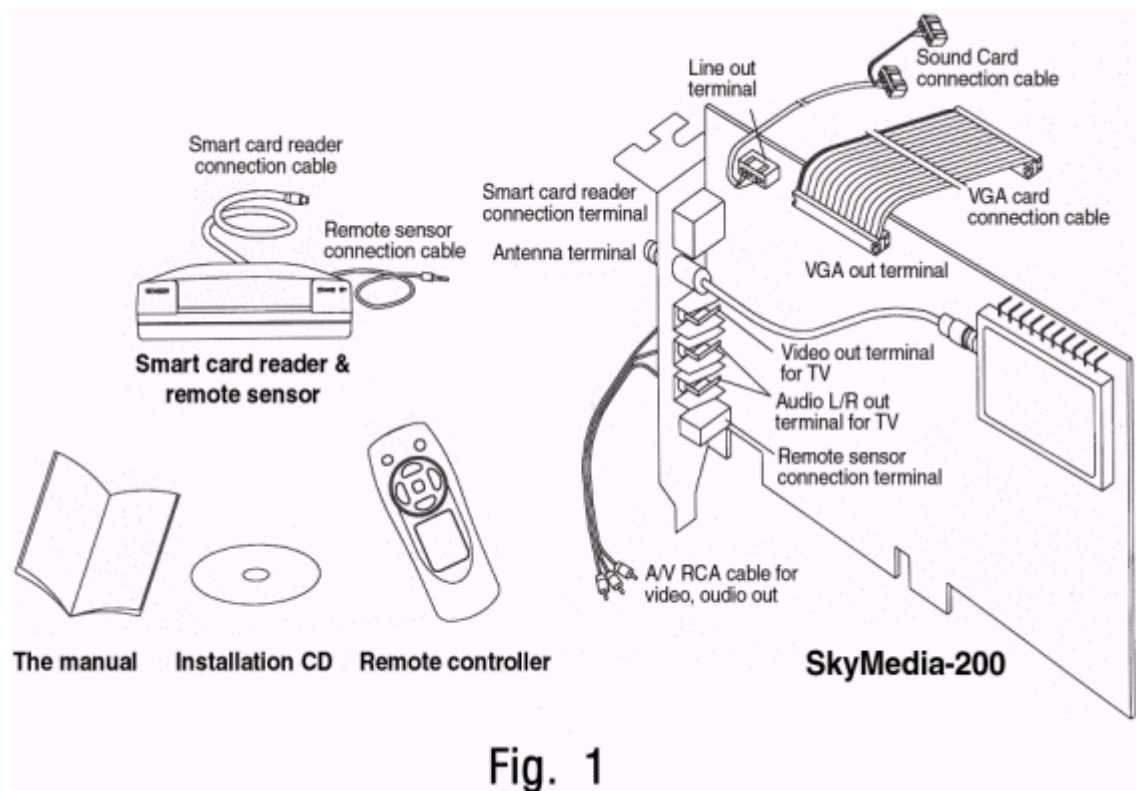




Fig. 1

## 2. Downloading the latest installation software from web-site

- 1) Open URL <http://www.telemann.com/index.html> by using your web browser such as “Internet Explore“ or “Netscape Communicator”.
- 2) Click the “INFORMATION CENTER” at the upper right corner of the web page you have just opened.



- 3) Click the disk icon of the SkyMedia-200 to download the installation software.

PRODUCT INFORMATION	DOWNLOAD
SkyMedia-100	
<a href="#">SkyMedia-200</a>	

- 4) Then the list of the downloadable software will appear as follows.

### *SkyMedia-200*

NO.	DATE	TITLE	FILE SIZE	DOWNLOAD
8	30-09-99	News Installation Linux driver Kernel V2.2.8 for SkyMedia-200	9550KB	
7	27-09-99	New Installation SW V2.0-NT40 for SkyMedia-200	1794KB	
6	27-09-99	New Installation SW V2.0Win9x for SkyMedia-200	6524KB	

Choose the software version you want to download in the list.

Check your OS environments (e.g. Win9x, WinNT40, Linux, etc.) and software version information.

The current latest version is 2.0.

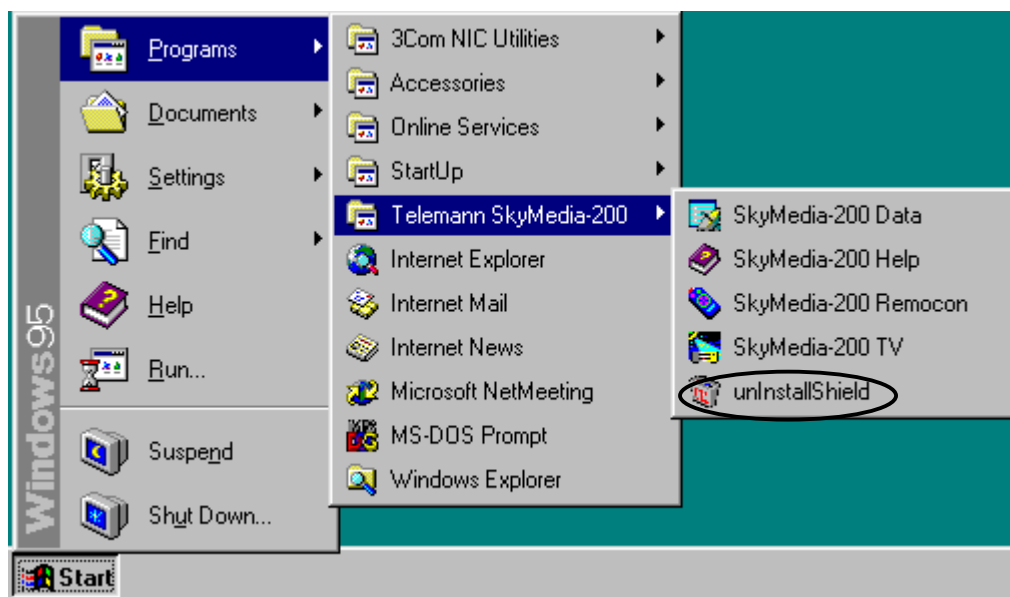
### 3.Clean up existing SkyMedia-200 device driver and software

#### 3-1. Windows 95/98

##### 3-1-1. Software uninstall

- 1) Terminate all the SkyMedia-200 applications such as Sky200tv, Sky200d and Sky200r.
- 2) Run unInstallShield from SkyMedia-200 folder as following figure.

(“Start”→“Programs”→ “Telemann SkyMedia-200”→ “UninstallShield”)



### 3-1-2. Driver uninstall

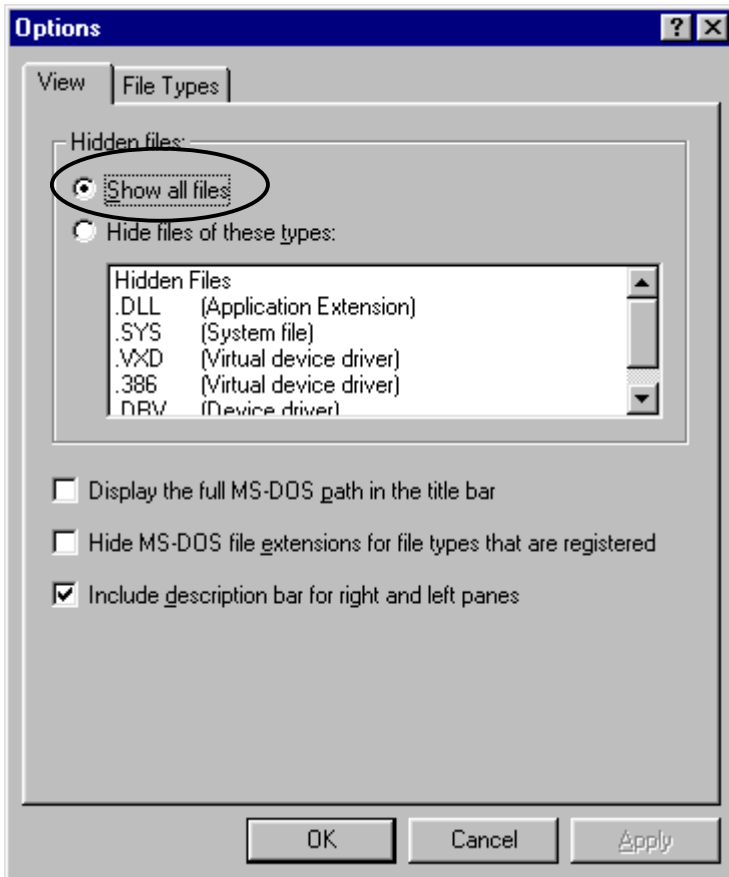
1) You must check the “Exploring” options to show all files.

a) Windows 95

Click on “Start”, Select “Programs”, Click on “Windows Explorer”.

Click on “View” menu, Click on “Options...” menu.

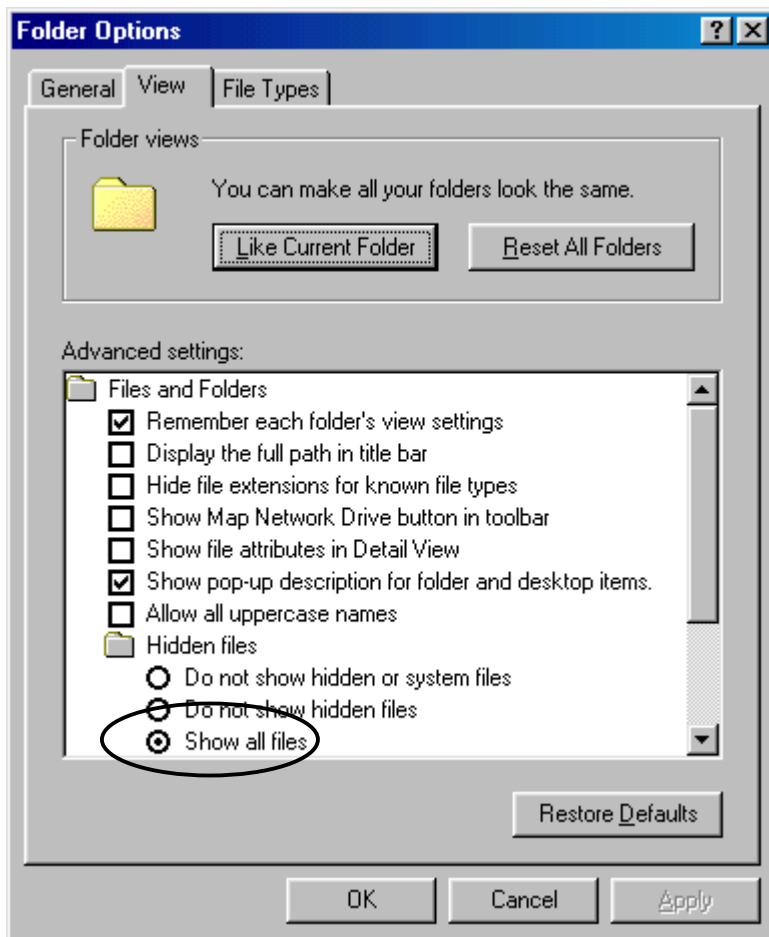
You have to check “Show all files” button in “View” tab



b) Windows 98

Click on “Start”, Select “Programs”, Click on “Windows Explorer”.

Click on “View” menu, Click on “Folder Options...” menu.



You must check “Show all files” button in “View” tab

2) Delete the following four files related to the SkyMedia-200.

C:\Windows\Inf\Other\TelemannSKYMEDIA.inf

C:\Windows\Inf\Skymedia.inf

C:\Windows\System\Skymedia.vxd

C:\Windows\System\Skymedia.bin

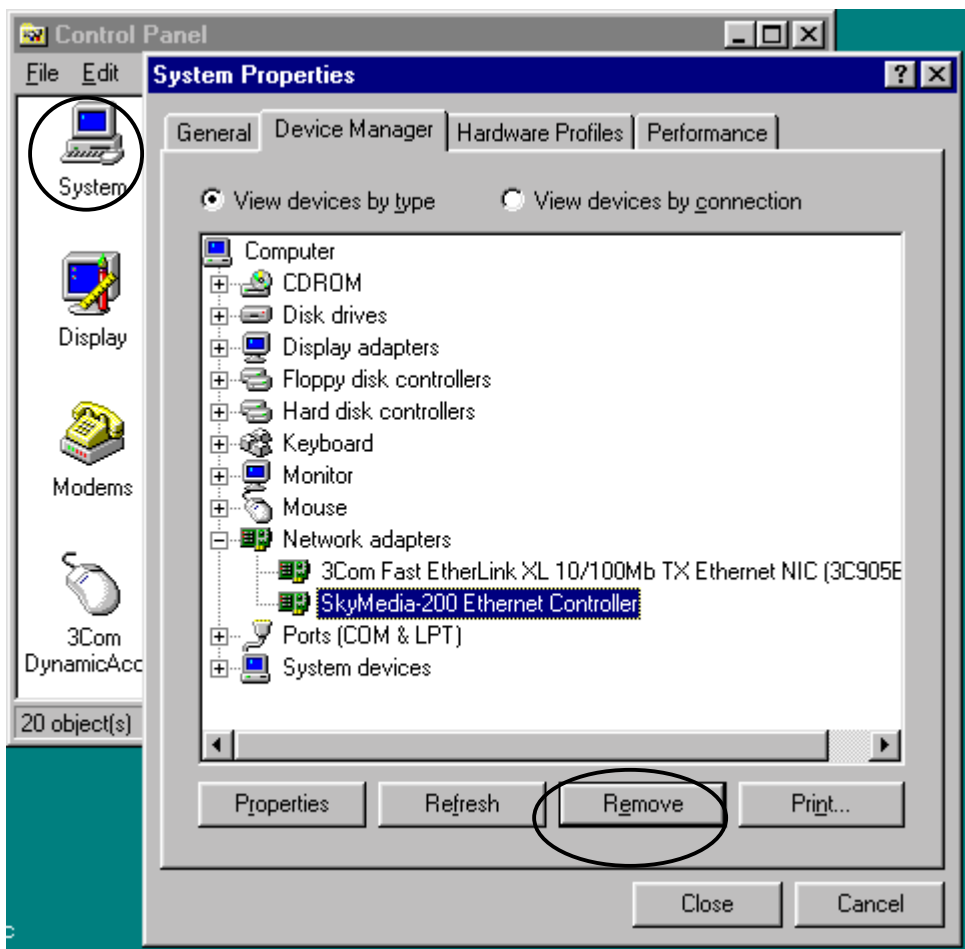
3) Click on “Start”, Select “Settings”, Click on “Control Panel”.



Double click “System”, Click on “Device Manager” tab, Double click “Network adapters”.

You select “SkyMedia-200 Ethernet Controller”, and click the “Remove” button.

Then “SkyMedia-200 Ethernet Controller” item will be deleted.



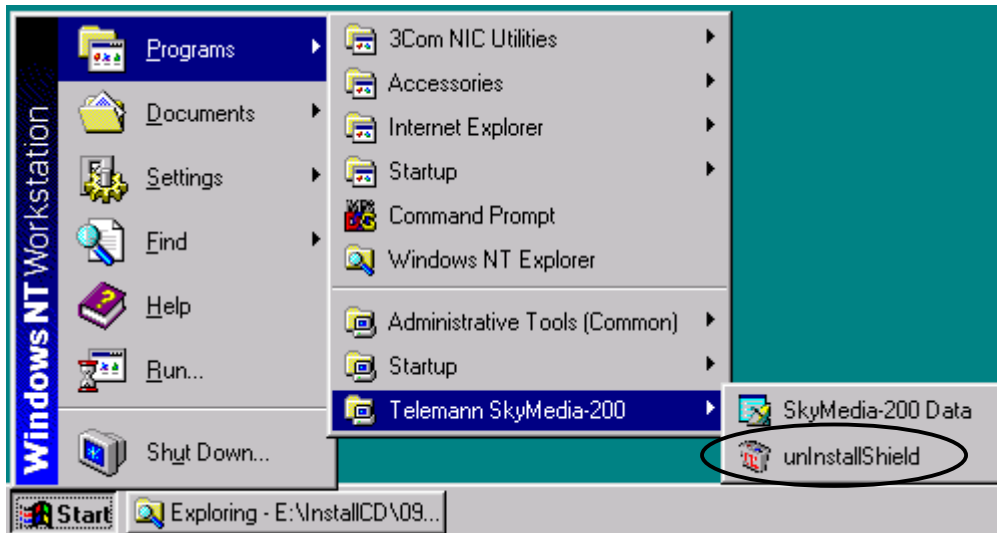
You have to restart your computer.



## 3-2. Windows NT

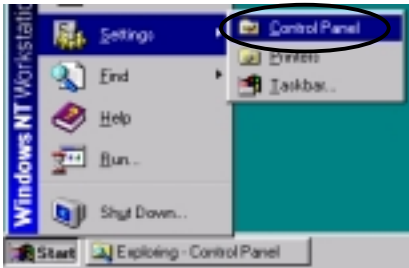
### 3-2-1. Software uninstall

- 1) Terminate the Sky200d application.
- 2) Run UnInstallShield from SkyMedia-200 folder as following figure.  
(“Start”→“Programs”→ “Telemann SkyMedia-200”→ “UninstallShield”)



### 3-2-2. Driver uninstall

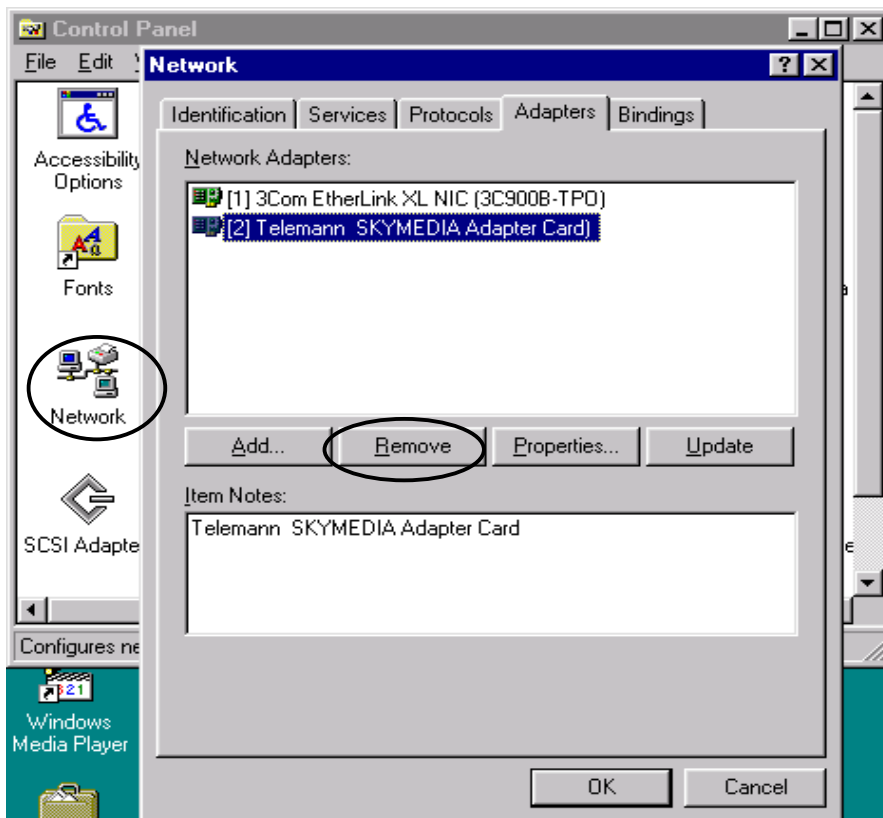
1) Open the Control Panel. (“Start”→“Settings”→ “Control Panel”)



2) Double click “Network” and select “Adapters” tab.

Click “Telemann SKYMEDIA Adapter Card” to select SkyMedis-200 and click Remove button.

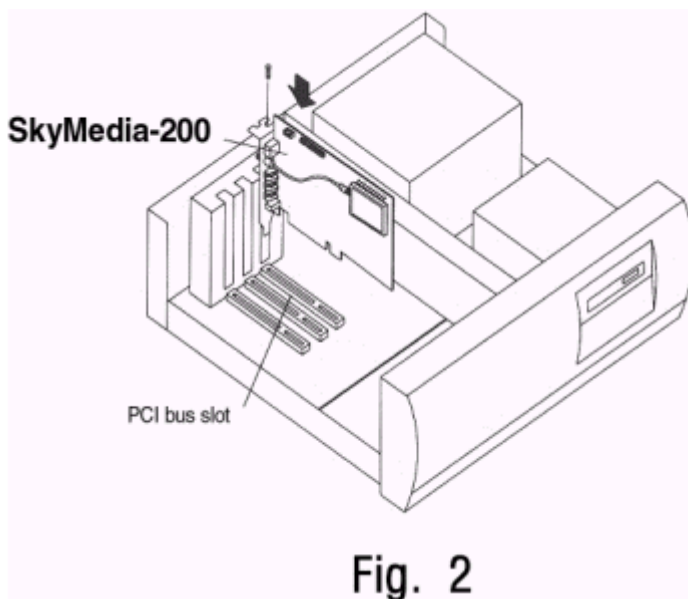
Then “Telemann SKYMEDIA Adapter Card” will be removed.



## 4. Hardware installation

### 4-1 Installation of SkyMedia-200 card in your PC

- 1) Turn off the computer and other connected devices to the computer.
- 2) Remove computer's housing according to instructions in its manual.
- 3) Insert SkyMedia-200 card into a PCI bus slot as illustrated in Figure 2.
- 4) Tight up the screw to fix the SkyMedia-200 card to the PCI bus slot.



**Fig. 2**

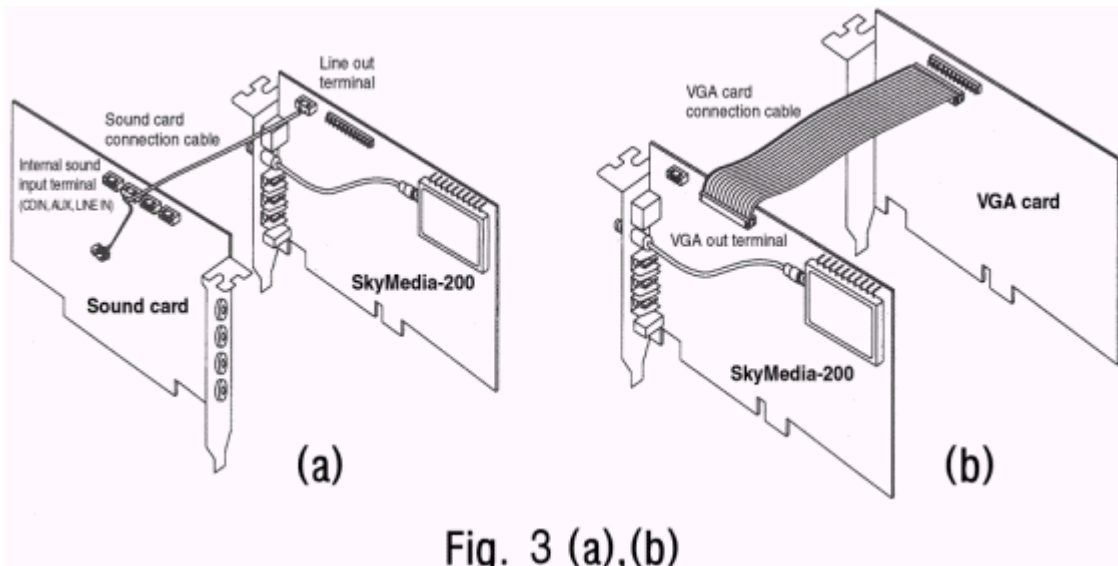
## 4-2 Connection of SkyMedia-200 card to Sound and VGA cards

You can enjoy digital satellite TV services on your PC monitor while receiving data via Internet by connecting SkyMedia-200 card to Sound and VGA cards as follows:

- 1) Connect the Line Out terminal of SkyMedia-200 card to an internal sound input terminal (CDIN, AUX, LINEIN) of Sound Card using Sound card connection cable as illustrated in Figure 3(a).

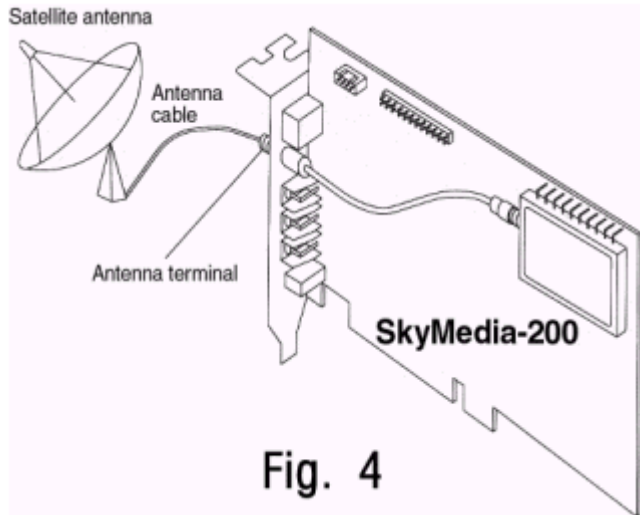
**Note)** Your Sound Card has several sound input terminals and each of them may have a different pin connection. To cope with that situation, SkyMedia-200 card has two different Line Out terminals. Make sure that the pin connection of SkyMedia-200 card is identical to that of Sound card prior to connecting them.

- 2) Connect the VGA out terminal of SkyMedia-200 card to the corresponding terminal of VGA card using VGA card connection cable (Refer to Figure 3(b)).



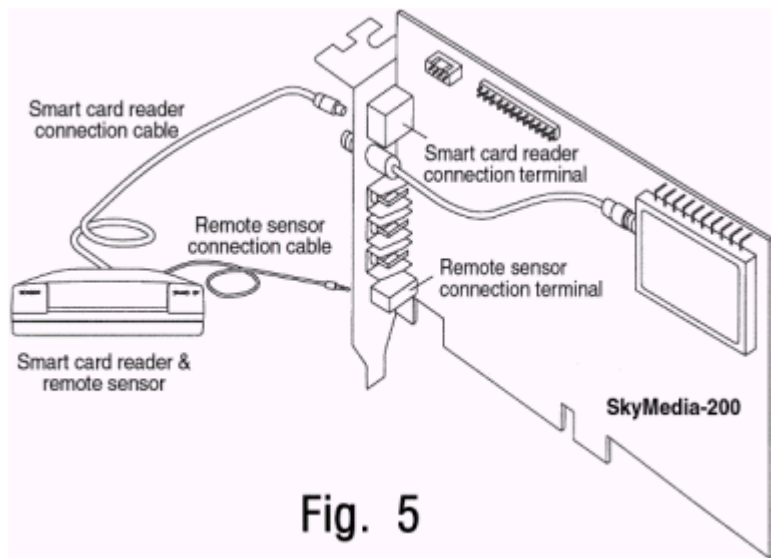
### 4-3 Antenna Connection

Connect Satellite antenna cable to the corresponding antenna terminal of SkyMedia-200 card as shown in the Figure 4.



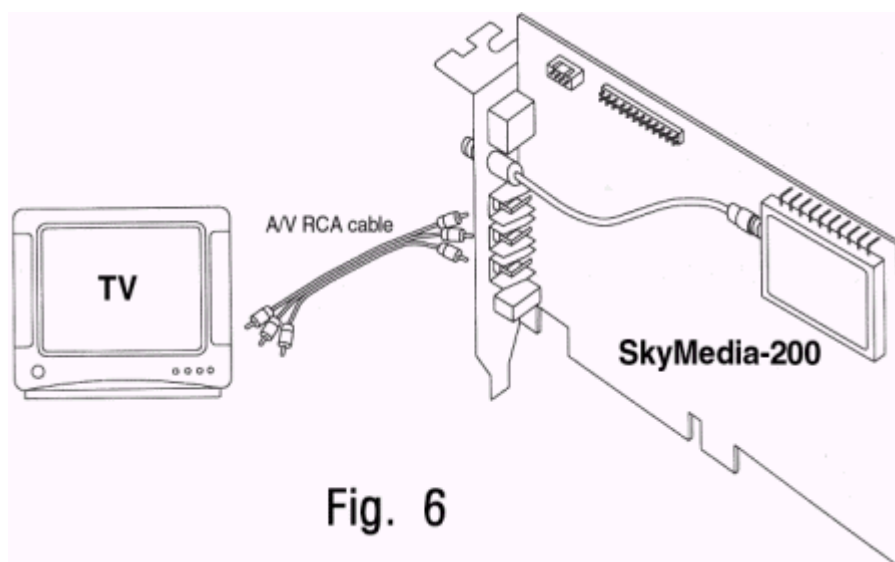
### 4-4 Connection of Smart Card Reader & Remote Controller Sensor

Connect the connection cables of Smart Card Reader & Remote sensor to the corresponding terminals of SkyMedia-200 card, respectively (Refer to Figure 5).



## 4-5 How to connect SkyMedia-200 card to TV

In order to watch program services on your TV, connect Audio L/R(White & Red) and Video(Yellow) out terminals of SkyMedia-200 card to the corresponding Audio L/R and Video input ports of your TV using A/V RCA cable as shown in Figure 6.



## 5.Driver installation

### 5-1. Windows 95

- 1) When Windows 95 boots up, SkyMedia-200 card will be automatically detected as a multimedia device, and then a window will appear on screen showing “New Hardware Found – PCI Multimedia Video Device”.

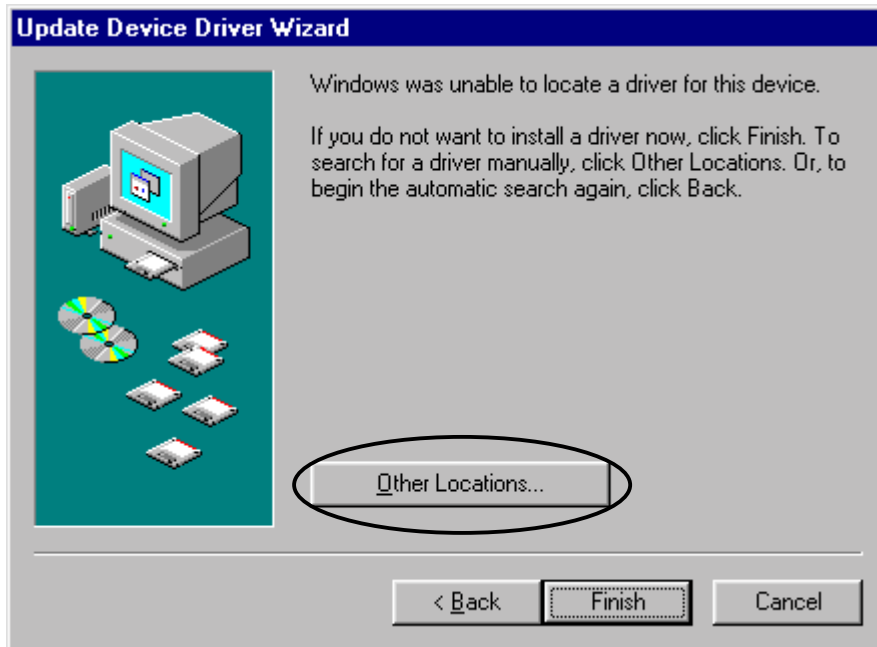
“Update Device Driver Wizard” window will appear.



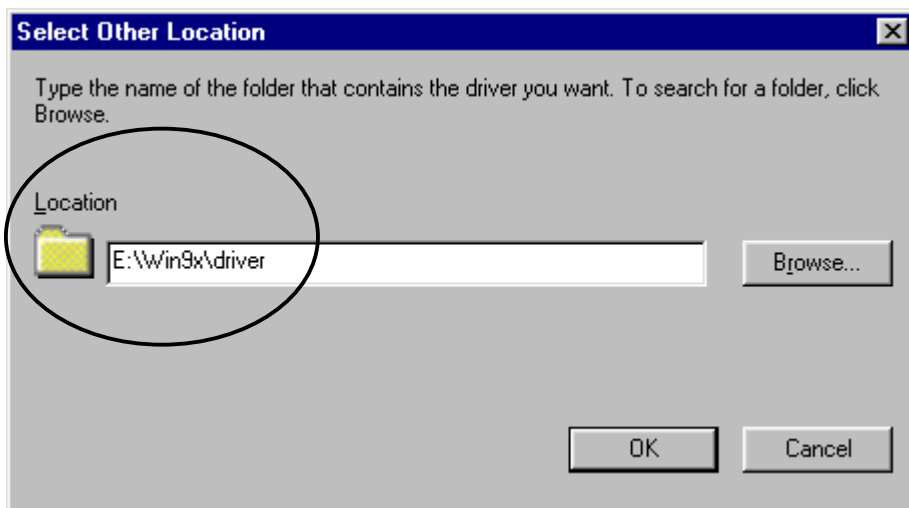
Click the “Next” button to continue the installation.

2) You should specify the location of the SkyMedia-200 driver.

Click “Other Location...” to select the directory where the SkyMedia-200 driver file is located.



3) “Select Other Location” window will appear.



Type the full path to the directory where SkyMedia-200 device driver file is located.

You can also select the directory by clicking the “Browse...” button.

There should exist “Skymedia.inf” file in the selected directory.

Click the “OK” button.



- 4) When the appropriate driver is found, the window will display the device name (“SkyMedia-200 Ethernet Controller”) as following figure.



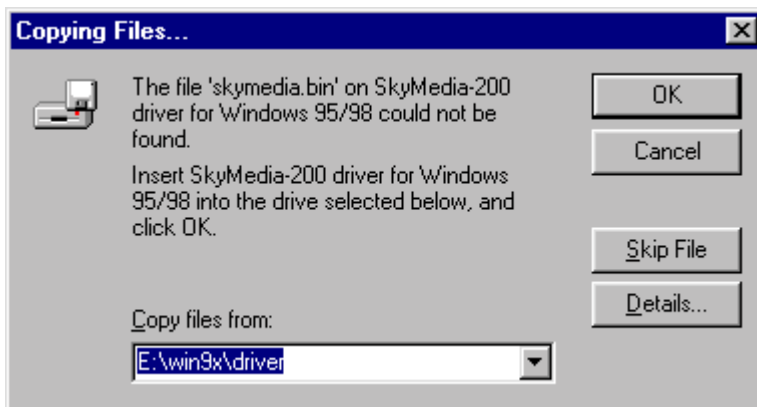
Click the “Finish” button, then the Windows will start to copy appropriate files into the Windows directory.

- 5) The windows may ask you to specify driver directory during the installation process with following message.



Click “OK” button to specify the driver directory.

Then the dialog box where you can specify the location will show up as following figure.



You should select the directory of the SkyMedia-200 device driver.

The directory is the same one you specified at “Location” in the step 3)

When the Windows asks you to insert Window 95 CD-ROM, insert it and specify its location.

6) The installation of the SkyMedia-200 device driver will be completed.

7) You have to restart your computer.

## 5-2. Windows 98

- 1) When Windows 98 boots up, SkyMedia-200 card will be automatically detected as a multimedia device, and then a window will appear on screen showing “New Hardware Found – PCI Multimedia Video Device”. “Add New Hardware Wizard” window will appear. Click the “Next” button to continue the installation.



- 2) The Windows will ask you what to do for installation. Select “search for the best driver for your device” and click “Next” to continue.



3) You should specify the location of the SkyMedia-200 driver.

Type the full path to the directory where SkyMedia-200 device driver file is located.



You can also select the directory by clicking the “Browse...” button.

There should exist “Skymedia.inf” file in the selected directory.

Click the “Next” button.

4) When the appropriate driver is found, the window will display the device name (“SkyMedia-200 Ethernet Controller”) as following figure.



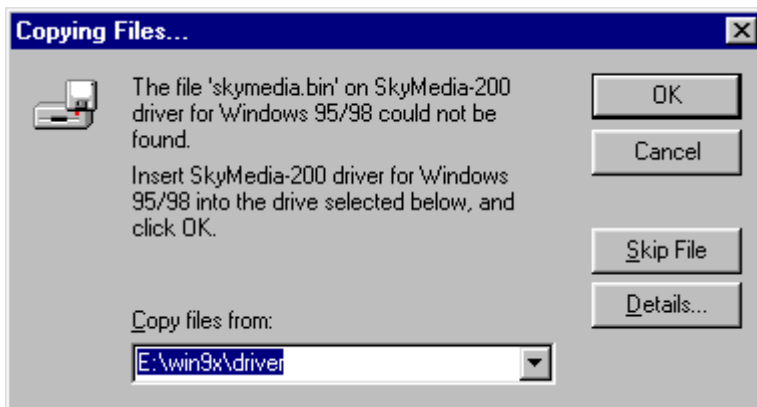
Click the “Next” button.

5) The windows may ask you to specify driver directory during the installation process with following message.



Click “OK” button to specify the driver directory.

Then the dialog box where you can specify the location will show up as following figure.



You should select the directory of the SkyMedia-200 device driver.

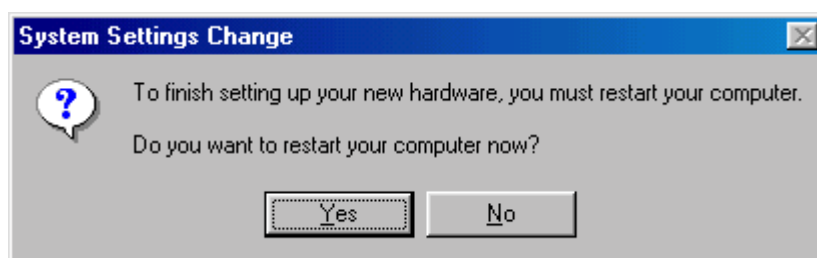
The directory is the same one you specified at “Specify a location” in the step 3)

When the Windows asks you to insert Window 98 CD-ROM, insert it and specify its location.

6) Click “Finish” button to complete the installation when the following window appear.



7) You have to restart your computer.



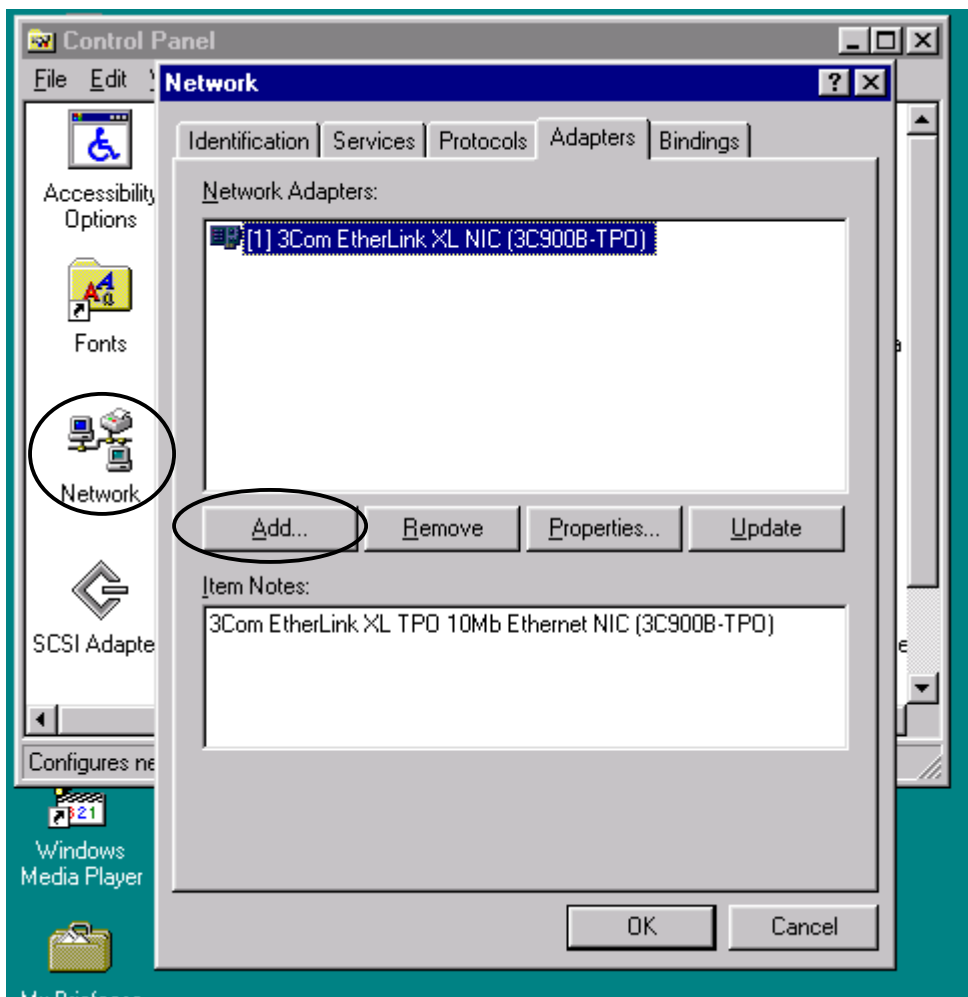
## 5-3. Windows NT

1) Open the Control Panel.

(“Start”→“Settings”→ “Control Panel”).



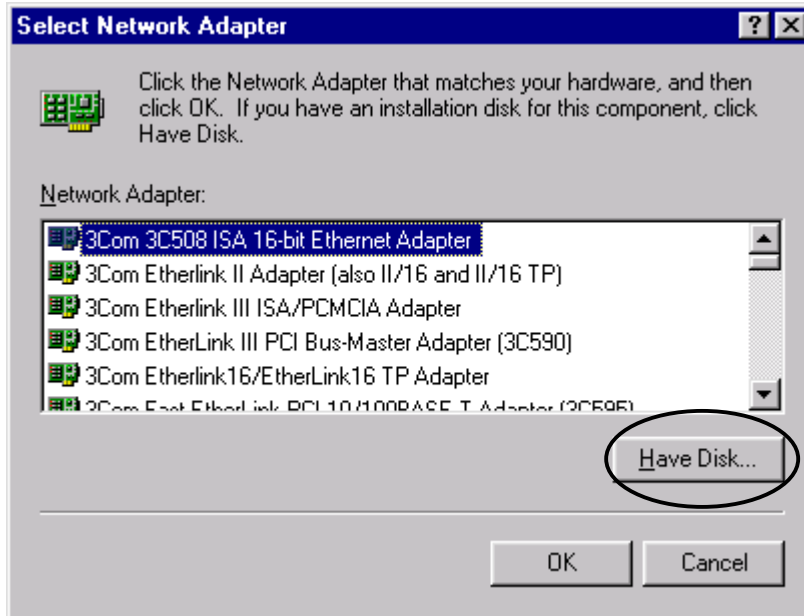
2) Double click “Network” and select “Adapters” tab.



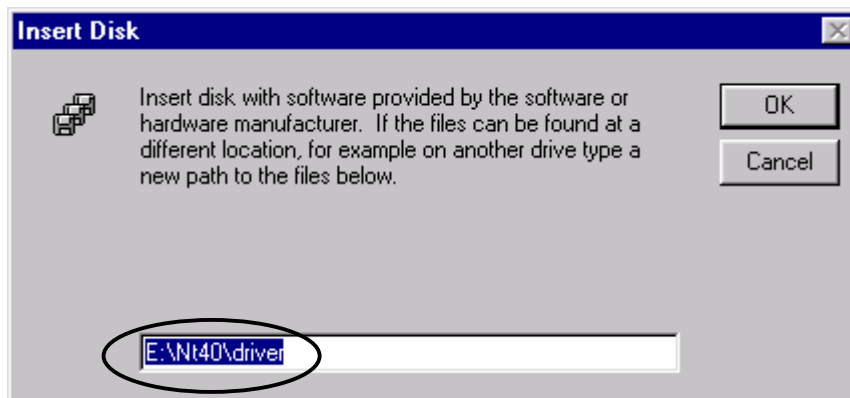
Click the “Add...” button to add SkyMedia-200 adapter.

3) “Select Network Adapter” window will appear.

Click the “Have Disk” button.



4) “Insert Disk” window will appear.



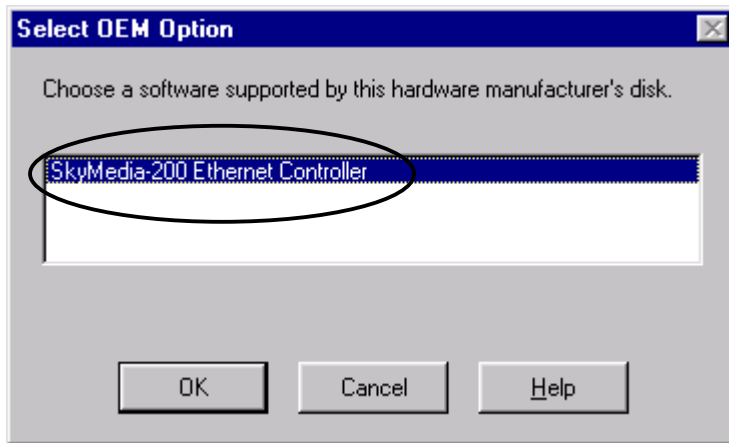
Type the full path to the directory where SkyMedia-200 device driver file is located.

There should exist “Oemsetup.inf” file in the selected directory.

Click the “OK” button.

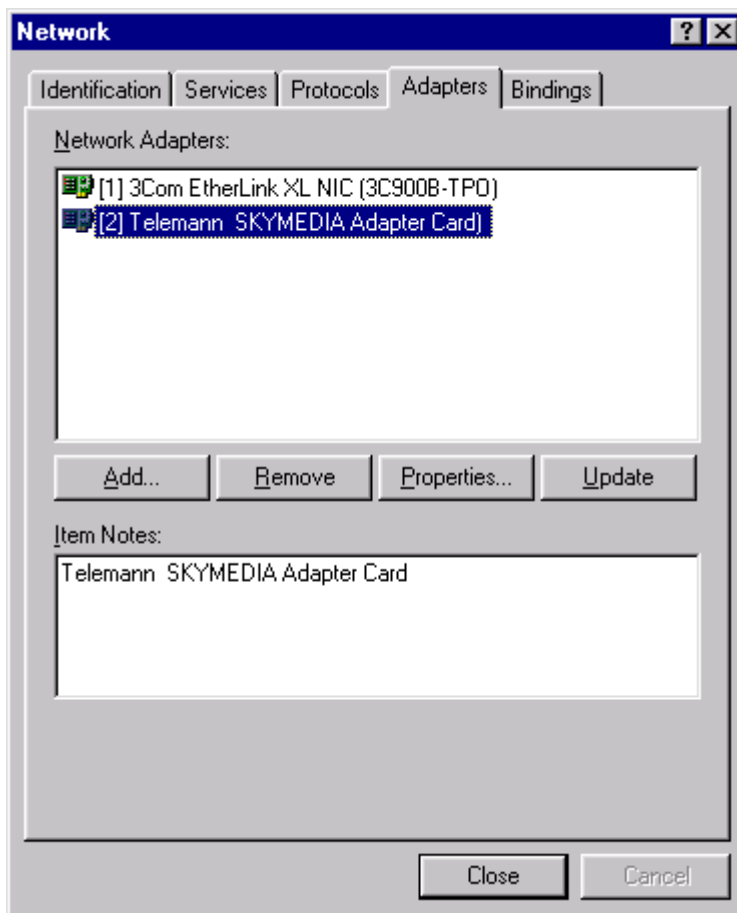


- 5) When the appropriate driver is found, the window will display the device name (“SkyMedia-200 Ethernet Controller”) as following figure.



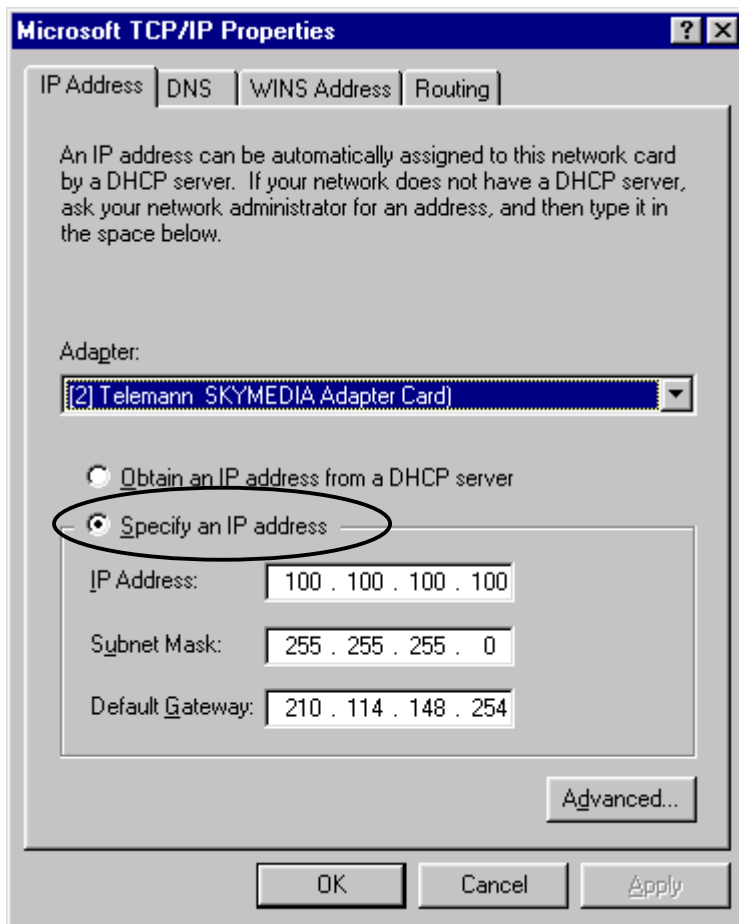
Click the “OK” button.

- 6) “Telemann SKYMEDIA Adapter Card” will be inserted at “Network Adapters” group.



Click the “Close” button.

7) You should set TCP/IP configuration in the dialog box as shown in following figure.



Check “specify an IP address” to set IP address manually.

Enter any number in the IP Address edit box,

as this IP Address has no meaning for SkyMedia-200 operation

8) You must shut down and restart your computer before the new settings will take effect.

## 6. Driver installation Verification

### 6-1. Windows 95/98

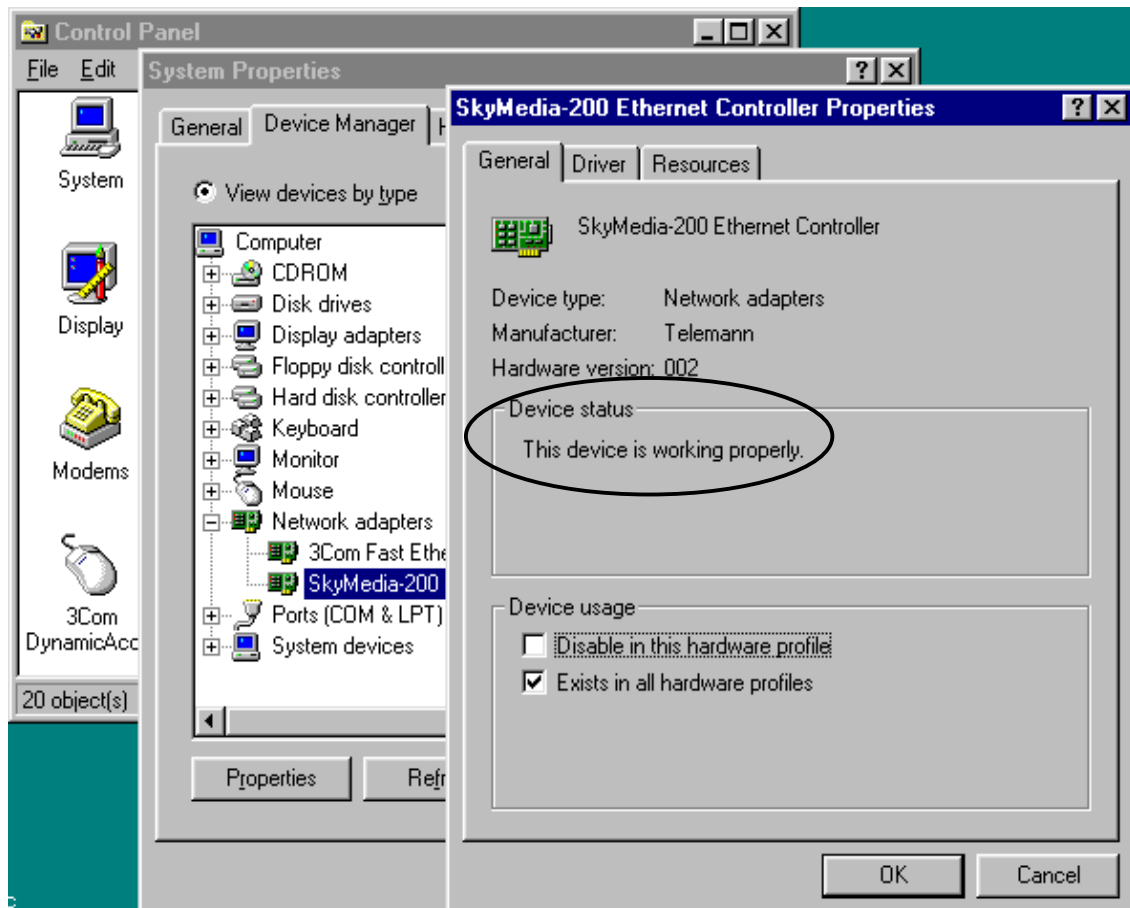
You can verify whether the SkyMedia-200 device driver installation is successfully completed as follows:

- 1) Click on “Start”, select “Settings”, and click on “Control Panel”.



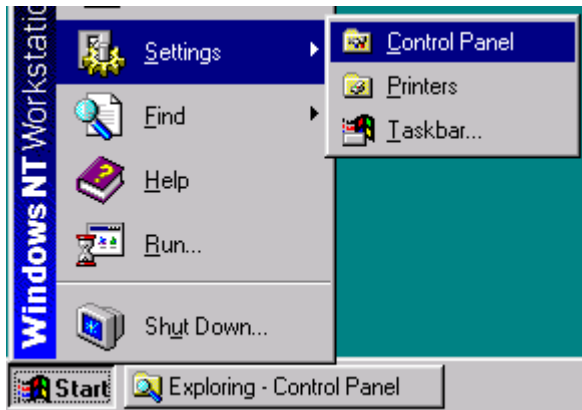
- 2) Double click on “System”, Select “Device Manager” tab., Double click on “Network adapters”

Double click on “SkyMedia-200 Ethernet Controller”, and the sub-window, “SkyMedia-200 Ethernet Controller Properties”, will be displayed. From its “Device status”, you can find the message “This device is working properly”, which confirms that you successfully completed the installation.



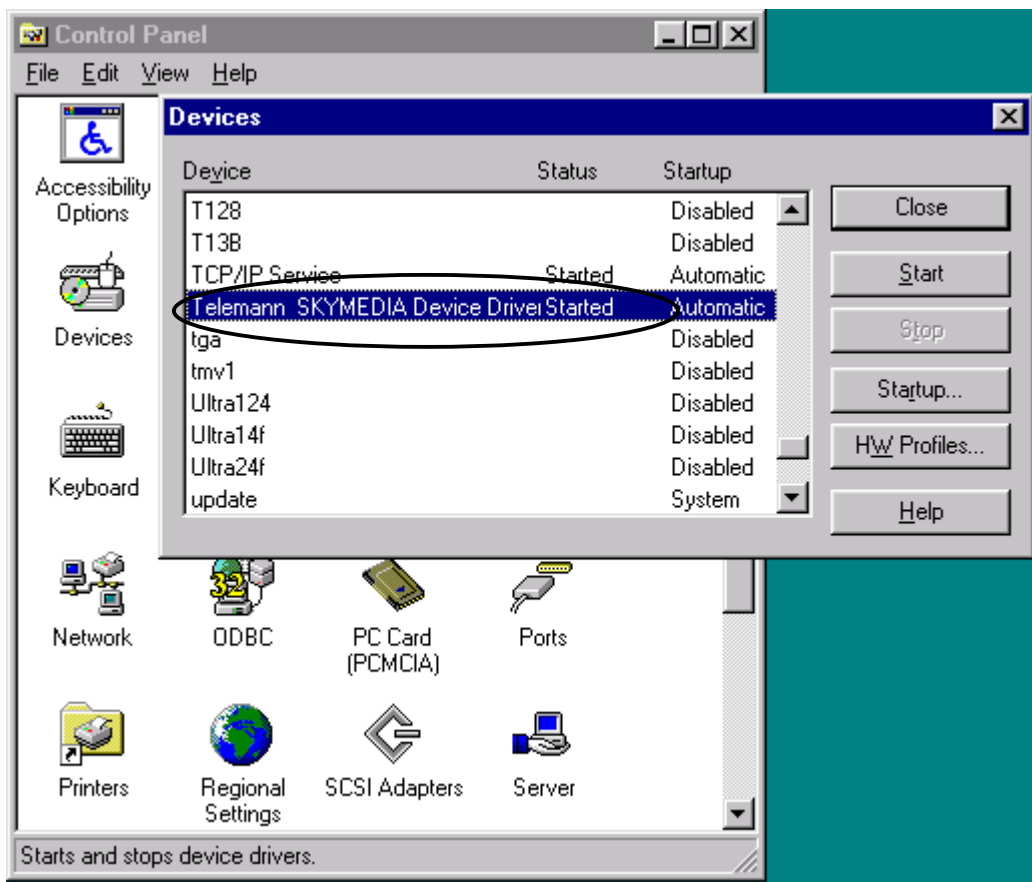
## 6-2. Windows NT

1) Click on “Start”, select “Settings”, and click on “Control Panel”.



2) Double click on “Devices”.

You can find the message, “Telemann SKYMEDIA Device Started”, which confirms that you successfully completed the installation.



## 7. Software installation

### 7-1. Windows 95/98

- 1) Double click on "Setup.exe" in SkyMedia-200 Installation's Win9x directory.
- 2) "Welcome" window will appear. Click the "Next" button.
- 3) "Choose Destination Location" window will appear.  
The default directory is "C:\Program Files\SkyMedia-200".  
You can select other directory by clicking the "Browse" button.  
Click the "Next" button.
- 4) Setup program will install SkyMedia-200 on the selected directory.
- 5) The Windows will ask you whether install DirectX 6.0 into your computer. Click the "Yes" button.
- 6) "Restart Computer" window will appear.  
Select "Yes, I want to restart my computer now". Click the "Finish" button.

### 7-2. Windows NT

- 1) Double click on "Setup.exe" in SkyMedia-200 Installation's Nt40 directory.
- 2) "Welcome" window will appear. Click the "Next" button.
- 3) "Choose Destination Location" window will appear.  
The default directory is "C:\Program Files\SkyMedia-200".  
You can select other directory by clicking the "Browse" button.  
Click the "Next" button.
- 4) Setup program will install SkyMedia-200 on the selected directory.
- 5) "Restart Computer" window will appear.  
Select "Yes, I want to restart my computer.". Click the "Finish" button.

## 8. Trouble shooting of Installation

### 8-1. Windows 95/98

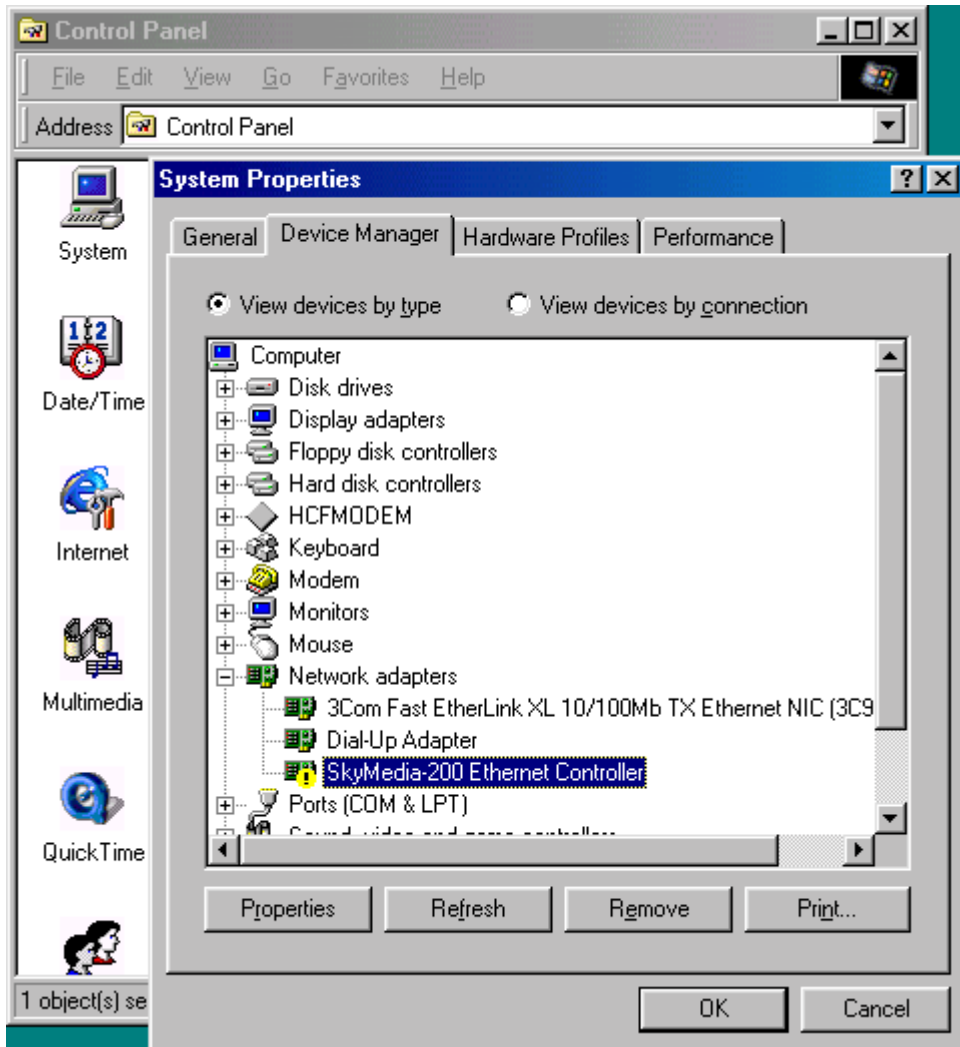
If you have any problem when you install the device driver of SkyMedia-200, you may find a solution to the problem you have encountered from this section.

- 1) When you can not find “SkyMedia-200 Ethernet Controller” in the Networks adapters list, check if there is “PCI Multimedia Video Device” in the “Other devices” list. In that case, you should remove it and reinstall the driver as following procedures.



- a) Click on ‘Start’, select ‘Settings’, and click on ‘Control Panel’.
- b) Double click on ‘System’.
- c) Select ‘Device Manager’ tab.
- d) Double click on ‘Other Devices’.
- e) If there is ‘PCI Multimedia Video Device’, you should remove it and reboot your computer.
- f) After rebooting Windows will detect SkyMedia-200 as a ‘PCI Multimedia Video Device’ and install device driver as a procedure of [3-1](#)

2) When there is a yellow exclamation mark on the SkyMedia-200 Ethernet Controller in the Network adapters, you should check if there is any resource conflict as following procedure.



Click on “Start”, Select “Settings”, Click on “Control Panel”

Double click “System”, Click on “Device Manager” tab, Double click “Network adapters”,

Click on “SkyMedia-200 Ethernet Controller”.

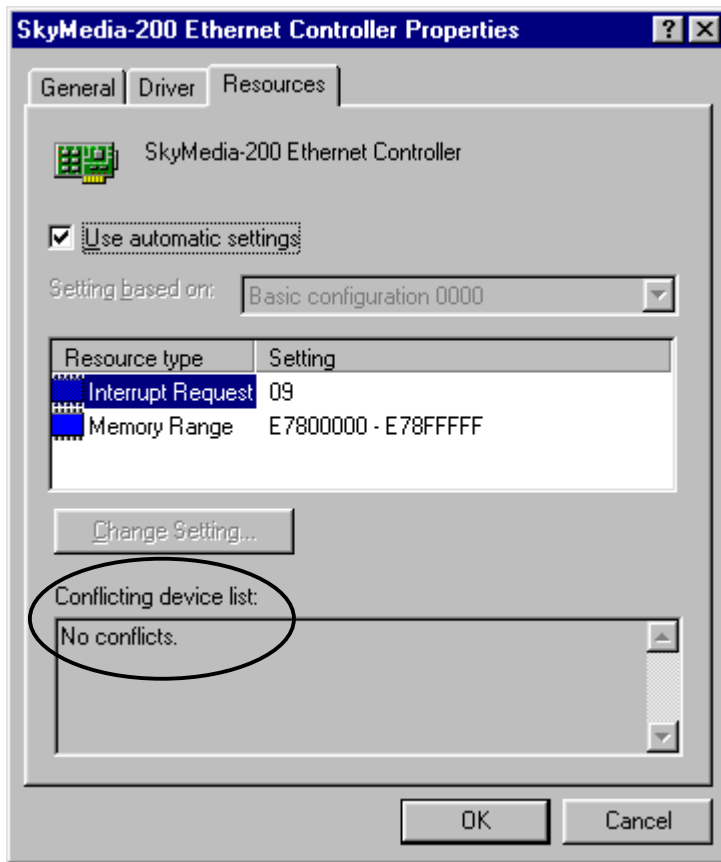
If you can see a yellow exclamation mark on “SkyMedia-200 Ethernet Controller”, it means that SkyMedia-200 device driver was not installed successfully.

In this case, Check the followings.

a) In case of the resources conflict such as interrupt conflict.

Double click “SkyMedia-200 Ethernet Controller”.

Click on “Resources”.



If “Conflicting device list” says “No conflicts”, It means that there is no conflict of interrupt .

If there is the message other than “No conflicts” in the “Conflicting device list” field, it means that interrupt conflicts occurred.

You should reconfigure the interrupt number assigned to the SkyMedia-200, or remove unnessary device to free at least on IRQ

b) If there is no interrupt conflict, install SkyMedia-200 device driver again.

First, uninstall SkyMedia-200 device driver. Refer to the chapter “3. Clean up existing SkyMedia-200 device driver and software”[Page 5].

And install SkyMedia-200 device driver again. Refer to the chapter “5. Driver Installation”[Page 15].

3) The message box says that “Sytem error is occurred. Please restart system and run again” when execute the SkyMedia-200 application.

If you can not see a yellow exclamation mark on “SkyMedia-200 Ethernet Controller”, just restart your computer and execute the application again.

If you can see the yellow exclamation mark, you should reinstall device driver as section 2)[Page 31].

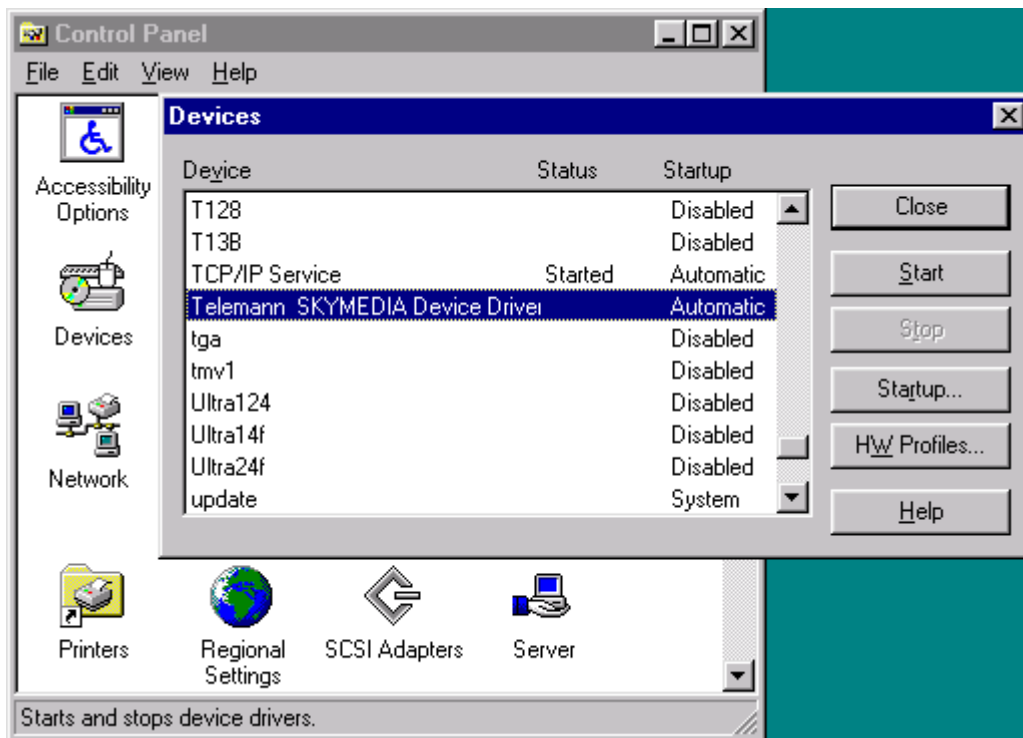


## 8-2. Windows NT

- 1) Click on “Start”, Select “Settings”, Click on “Control Panel”.

Double click “Devices”

If the status is not displayed as “Started”, it means that the driver was not installed successfully.



Remove and reinstall the driver in that case.

To remove the driver refer to the section 3-2.

To install the driver refer to the section 5-3.

- 2) The message box says that “System error is occurred. Please restart system and run again” when execute the SkyMedia-200 application.

In this case reinstall the driver as described in the section 1).

## 9. Quick trouble shooting for SkyMedia-200

Q) If you have problem when you get the video on computer monitor.

A) Check your VGA setting. Color resolution of VGA should be 16 bit or 24 bit colors.

Following procedure shows you how to set VGA color setting.

Start → Setting → Control Panel → Display → Settings → color pallet

→ 16 bit or 24 bit color

If you have still problem, check the cable connection between SkyMedia-200 and VGA card.

If it is connected between two cards, please remove it.

Q) If you don't have good quality of video on computer monitor.

A) SkyMedia-200 supports 2 kinds of Graphic Overlay Function. If you are using of Mode 1, change it to Mode 2. If SkyMedia-200 does not support Mode 2, it is because your VGA card does not have capability of Mode 2.

Here are the VGA cards list that can provide good quality of video on computer monitor.

1) Matrox Mystique and Millennium

2) Trident 9680, 9682, 9685

3) S3 Virge, Trio32, Trio64

4) ATI 3D Rage II, Rage III, Rage Pro

5) Cirrus Logic 5446, 5464, 5480.

And if you have better performance of PC, you will have better quality of video.

Q) If you can not receive internet data from satellite.

A) Check first your setting of '**SkyMedia-200 Data**' application whether you have right transponder and PIDs.

And make sure of TCP/IP protocol installation on your computer.

Following procedure shows you how to set TCP/IP protocol.

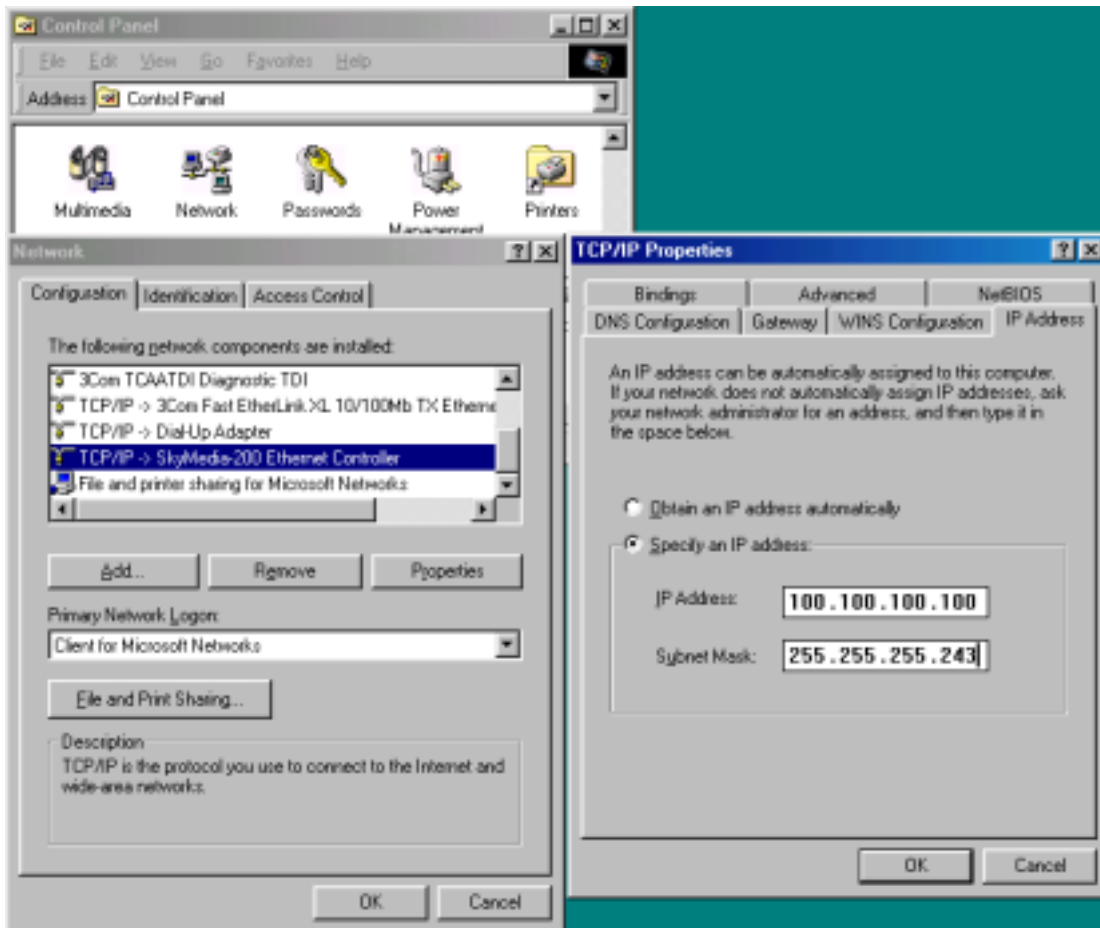
Start → Setting → Control Panel → Network → Add → Protocol → Microsoft

→ TCP/IP → OK

And set IP address to 'TCP/IP→ SkyMedia-200 Ethernet Controller'.

Start → Setting → Control Panel → Network

→ Select 'TCP/IP→ SkyMedia-200 Ethernet Controller' → Properties



Keep the Windows95 or Windows98 CD-ROM available during TCP/IP installation.

Q) If you can not get audio from your sound card.

A) Check your cable connection between SkyMedia-200 and sound card.

You can connect sound cable to AUX IN port of your sound card.

There are 3 different connectors in cable that SkyMedia-200 provides.

You can change it one by one until you can get audio from your sound card.

Q) If your computer is crashed when you run SkyMedia-200.

A) Check your VGA card setting. Color resolution of VGA should be 16 bit or 24 bit colors.