



[www.altman.co.uk](http://www.altman.co.uk)

# NetPrint Manager

## Manual

Copyright © 1999-2001 **Syntaxis Technology Ltd.**

Distributed world-wide by: -

**Altman & Associates**

Suite 5, 169 High Street, Boston Spa, West Yorkshire LS23 6BH

Tel: 01937 541400

Fax: 01937 541500

Email: [info@altman.co.uk](mailto:info@altman.co.uk)

# Contents

<b>CHAPTER 1</b>	<b>INTRODUCTION</b>	<b>1</b>
1.1	What is NetPrint?	1
1.2	System Architecture	1
1.3	Copyright	1
1.4	Change History	1
<b>CHAPTER 2</b>	<b>SETUP</b>	<b>2</b>
2.1	Installation	2
<b>CHAPTER 3</b>	<b>CONFIGURATION</b>	<b>6</b>
3.1	Control Panel	6
3.2	Licensing	6
3.3	NetPrint Manager Configuration	8
3.4	Network boot server configuration	8
3.5	NetPrint Station Configuration	9
3.5.1	The Known Station List	10
3.5.2	Log Settings	11
3.5.3	Impersonation Details	11
3.6	Adding a station configuration	11

3.6.1	NetPrint Station Setup	11
3.6.2	Authentication	12
3.6.3	Print System Link Configuration	13
3.6.4	Configuring Messages	13
<b>3.7</b>	<b>Service Configuration</b>	<b>15</b>
3.7.1	Setting the service Startup Type	15

## **CHAPTER 4      NETPRINT LOGGING      16**

<b>4.1</b>	<b>MoneyLoader entries</b>	<b>16</b>
<b>4.2</b>	<b>MoneyLoader Cash content</b>	<b>17</b>
<b>4.3</b>	<b>Clear the Log</b>	<b>17</b>
<b>4.4</b>	<b>Pcounter reports</b>	<b>18</b>
<b>4.5</b>	<b>Emptying the MoneyLoader</b>	<b>18</b>

## **CHAPTER 5      MONEYLOADER HARDWARE      19**

<b>5.1</b>	<b>Technical Specifications.</b>	<b>19</b>
<b>5.2</b>	<b>Locking Cashbox Instructions</b>	<b>19</b>
5.2.1	Remove Cashbox	19
5.2.2	Open the Cash Box	19
5.2.3	Resetting the Cashbox	19
5.2.4	Replacing the Cashbox	19
<b>5.3</b>	<b>Notes Box Instructions</b>	<b>20</b>
5.3.1	Remove Notes Box	20
5.3.2	Open the Notes Box	20
5.3.3	Replacing the Notes Box	20
<b>5.4</b>	<b>Setting the Security Alarm</b>	<b>20</b>

5.4.1	Replacing the battery	20
5.4.2	When to replace the battery	20

<b>CHAPTER 6</b>	<b>MONEYLOADER DISPLAYS</b>	<b>21</b>
------------------	-----------------------------	-----------

<b>CHAPTER 7</b>	<b>INDEX OF SCREEN-SHOTS</b>	<b>26</b>
------------------	------------------------------	-----------

## Chapter 1 Introduction

### 1.1 What is NetPrint?

The NetPrint system is a combination of hardware and software to allow clients to update network account balances via easy to use networked stations. There is one or more NetPrint 'servers', each of which are running Windows NT 4.0 and the NetPrint Manager Service software. Each NetPrint server may control one or more NetPrint stations. It is with the NetPrint stations that the end users interact.

Each NetPrint server will communicate with an account holding system to update and retrieve the user's balance. Currently, this is a Pcounter solution.

Authentication of user credentials is configurable on a per-station basis. Authentication is provided for the standard NT and NetWare NDS security managers. A simple plug-in interface also allows custom authentication to be performed as necessary.

### 1.2 System Architecture

The controlling factor in any NetPrint installation is the NetPrint Server (or servers). These servers communicate with the stations using a custom communications protocol. TCP/IP is used as the transport layer. Installation of a NetPrint station is simply a matter of plugging the unit into the local 10Base-T network and configuring a NetPrint server to manage the new unit.

The NetPrint stations contain no real software of their own - only a boot-package (ROM) to allow network based booting. This allows for trivial upgrades of the NetPrint station kernel software.

Since the stations boot off the network, appropriate support services must be provided. The distribution of the NetPrint software contains both DHCP and TFTP servers in order to boot the stations. These may be disabled if the local network already provides the requisite services.

Configuration of the system is achieved via a GUI interface in a Windows NT Control Panel Applet. This user-friendly applet is used to control every aspect of each NetPrint station individually. Also

provided is a separate log-enquiry applet to allow day-to-day administrative users to enquire of the system.

If required, the stations can be configured to display a set of rotating messages (e.g. for instructions, advertisements, announcements, etc.) during idle periods.

### 1.3 Copyright

This document is Copyright © 1999-2000 Syntaxis Technology Ltd, all rights reserved. This document contains unpublished proprietary intellectual property of Syntaxis Technology Ltd.

The copyright notice above does not evidence any actual or intended publication of such intellectual property or any related source code.

### 1.4 Change History

Date	Version	Main Changes
19/Oct/1999	1.0	Initial Release (beta)
16/Apr/2000	1.0.2	Initial User Release
28/Oct/2000	1.1	First encrypted release
05/Dec/2000	1.2	Non-infinite DHCP lease Full NetWare context
19/Jan/2001	1.3	Logging cash content
12/Feb/2001	1.4	Status enquiry

## Chapter 2 Setup

### 2.1 Installation

You will have received the NetPrint Manager software either on CD or via an email/web download. In the first case, if you have autorun enabled, simply placing the CD in the drive should start the Setup. If you do not have autorun enabled, or you are installing from a web/email download, double-click on the setup.exe file in Explorer.

**NOTE:** You must be logged on with administrative privileges in order to install the software. Once the software is installed, administrative privileges are no longer required.

Once the Setup program has initialised, follow the on-screen instructions as below to install the software.

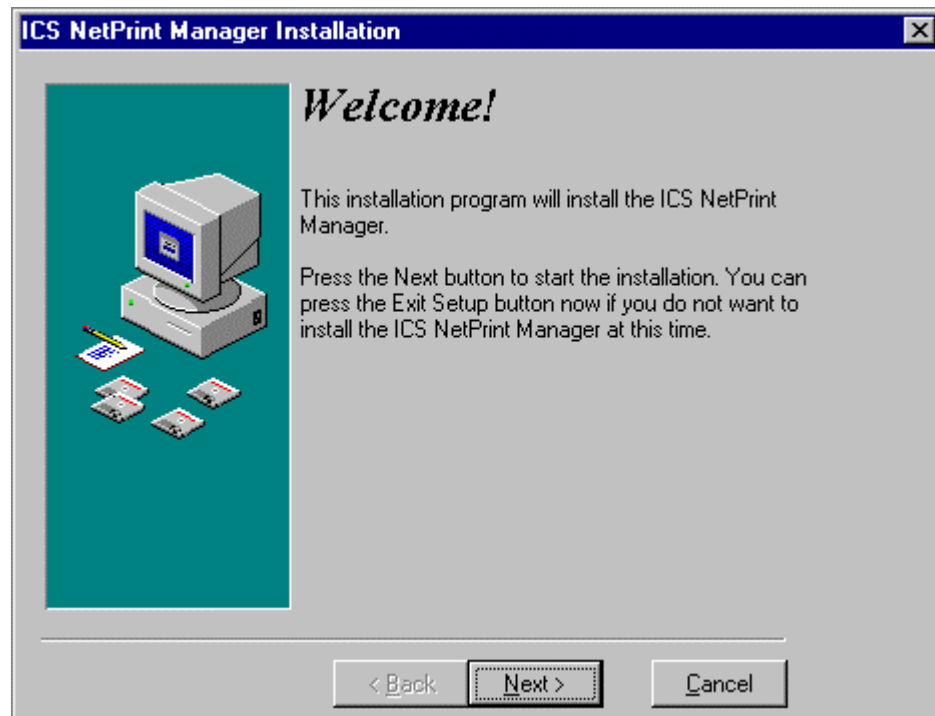


Figure 2-1 Initial NetPrint install screen

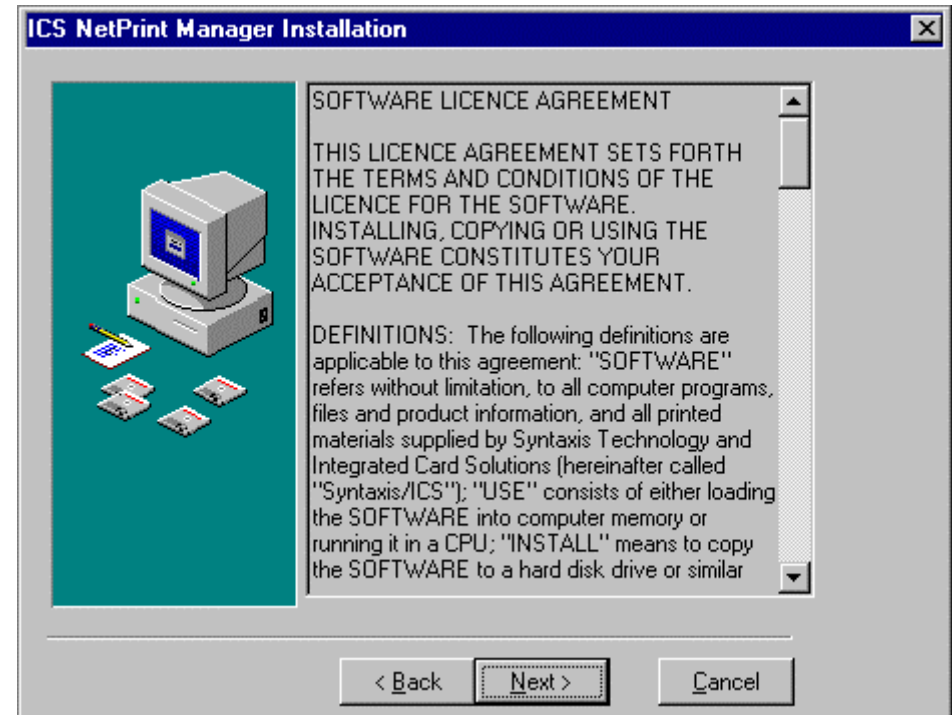
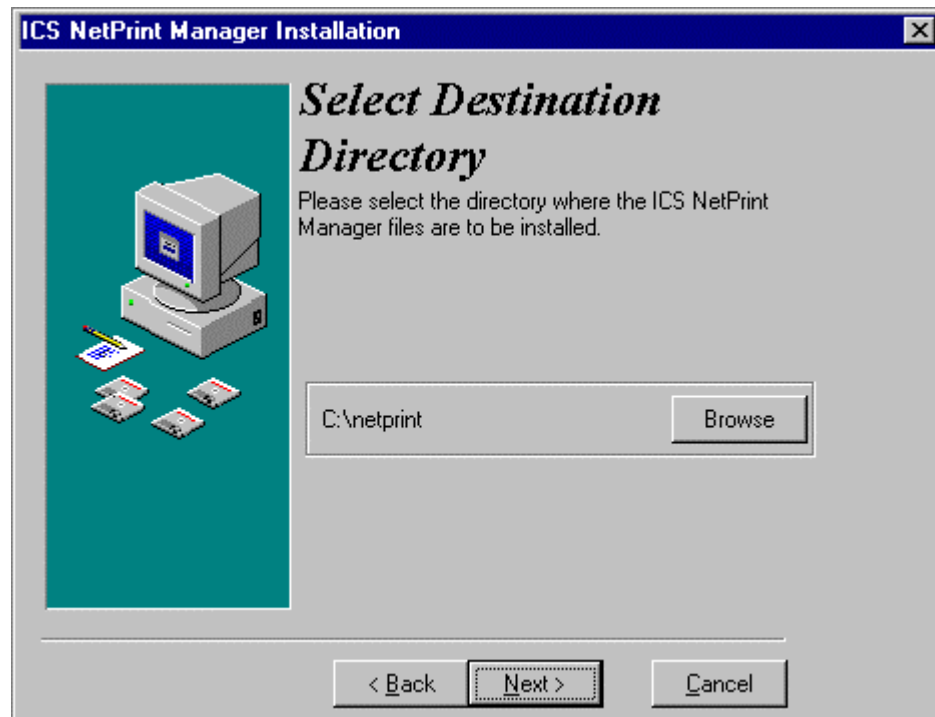


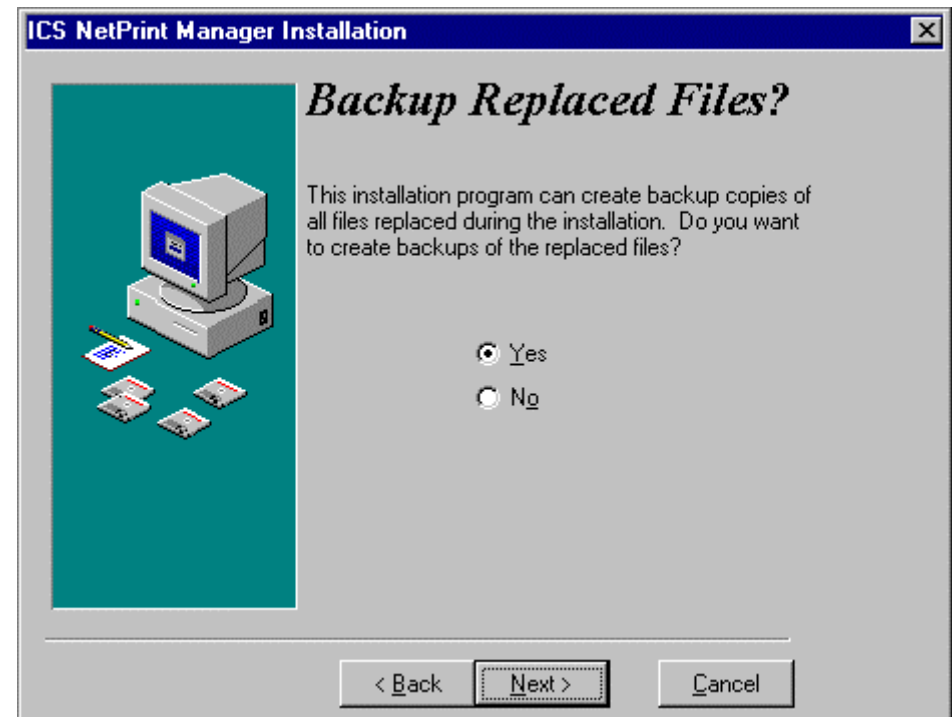
Figure 2-2 NetPrint Licence Agreement



**Figure 2-3 Select NetPrint Directory**

Choose a local drive.

Since the system runs as an NT system service, you may not install the system on a network drive (i.e. one that is not local to your machine). Installing on a network drive will result in Error 5: Access is denied errors when trying to start the service.



**Figure 2-4 Whether to backup current NetPrint files**

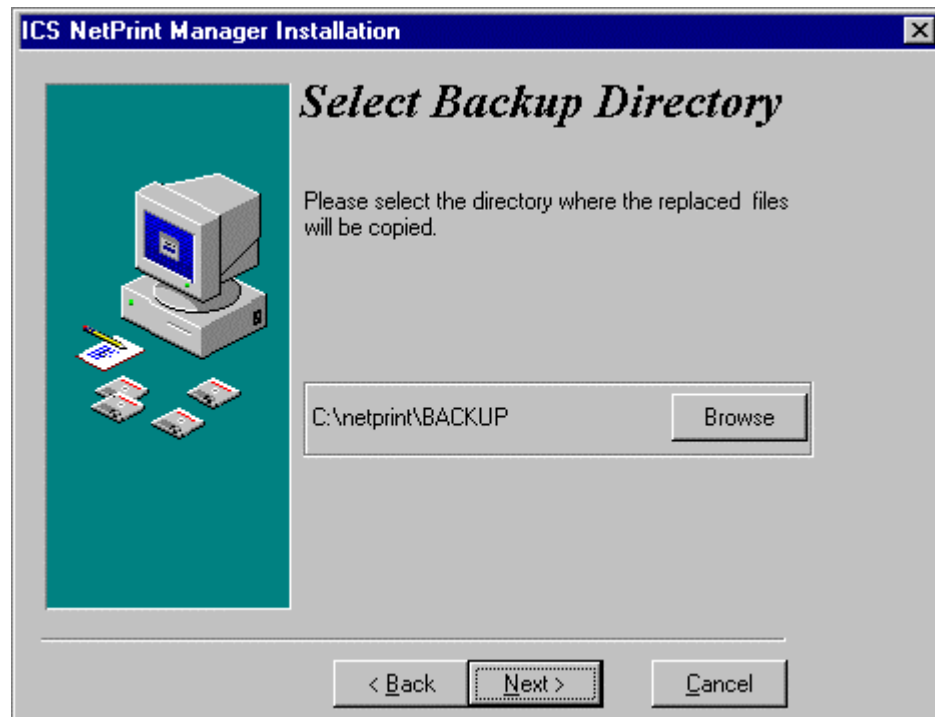


Figure 2-5 Select NetPrint backup directory

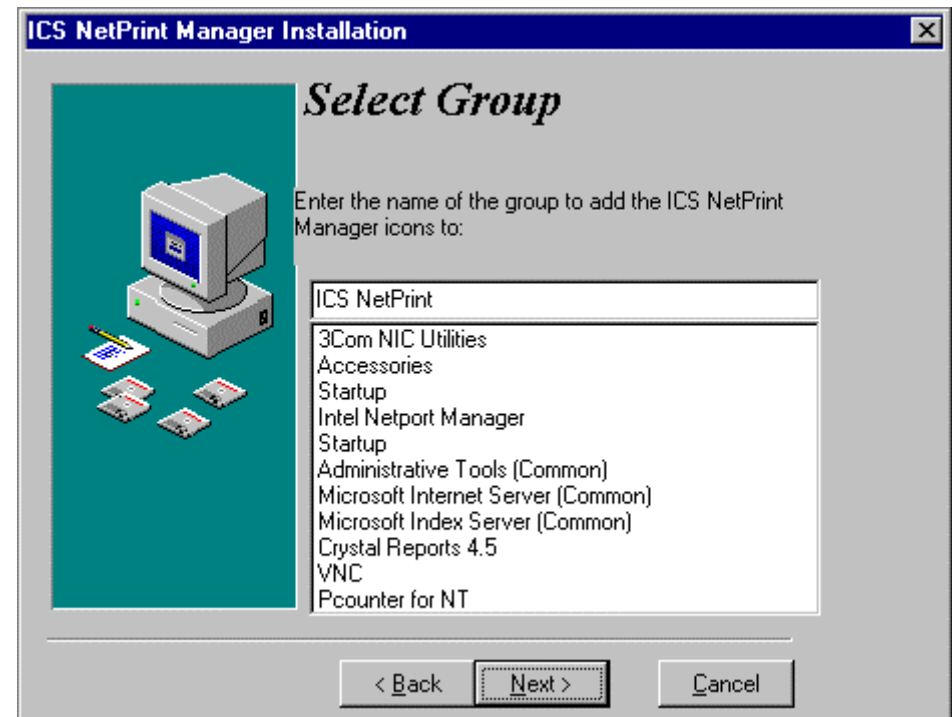
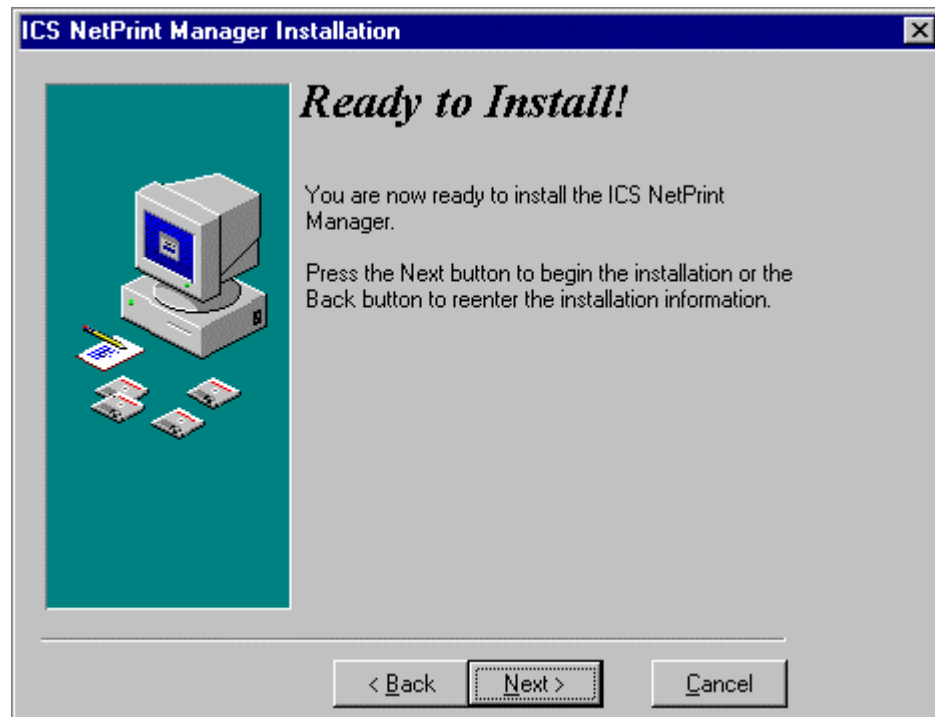
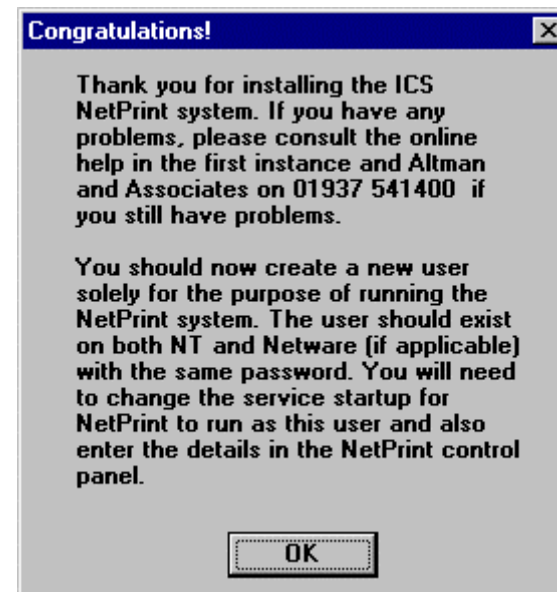


Figure 2-6 Select NetPrint Group-name





**Figure 2-7 NetPrint set-up choices completed**



**Figure 2-8 NetPrint successfully installed**

If you have any hardware queries, please contact ICS.

If you have any software queries, please contact Altman & Associates.

## Chapter 3 Configuration

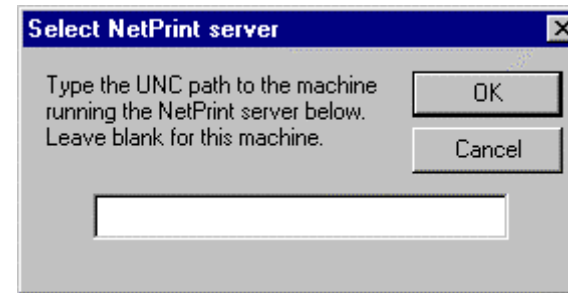
### 3.1 Control Panel

The NetPrint Control Panel Applet (moneycpl - Figure 3-1 shows its icon) is used to configure all options. It allows configuration of a remote NetPrint server, assuming that the logged-on user has the appropriate rights to the HKEY LOCAL MACHINE registry hive.



**Figure 3-1 Selecting the NetPrint Control Panel Applet**

Upon double clicking the NetPrint icon in Control Panel, you will be presented with a dialog similar to that in Figure 3-2. If you wish to configure a remote machine, enter its UNC path in the box (for example, "\\OtherBox"). If you wish to configure the local machine, leave the box blank.



**Figure 3-2 Selecting the NetPrint server**

### 3.2 Licensing

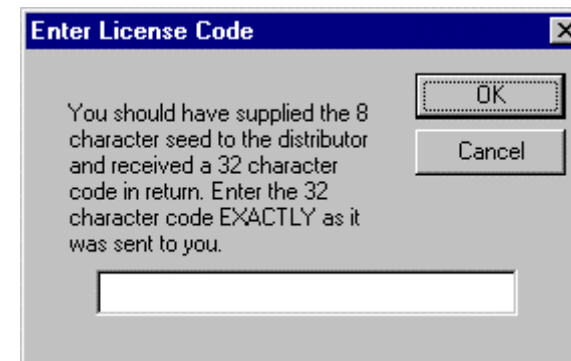
The NetPrint Manager software on the NT controller requires a licence code before it can run. If you attempt to start the Syntaxis Technology NetPrint Manager (netprintman) service without this code, you'll get a licensing error.



**Figure 3-3 NetPrint configuration, Licensing**

Run the control panel applet and go to the licensing page (Figure 3-3). You'll need the license seed at the top of the page. Contact Altman & Associates - or your NetPrint distributor - with the license seed. Ensure you give the seed exactly as it is displayed, including the dashes.

A 32-character (excluding dashes) code will then be sent to you. Click the **Register new license** button and type the license key in.



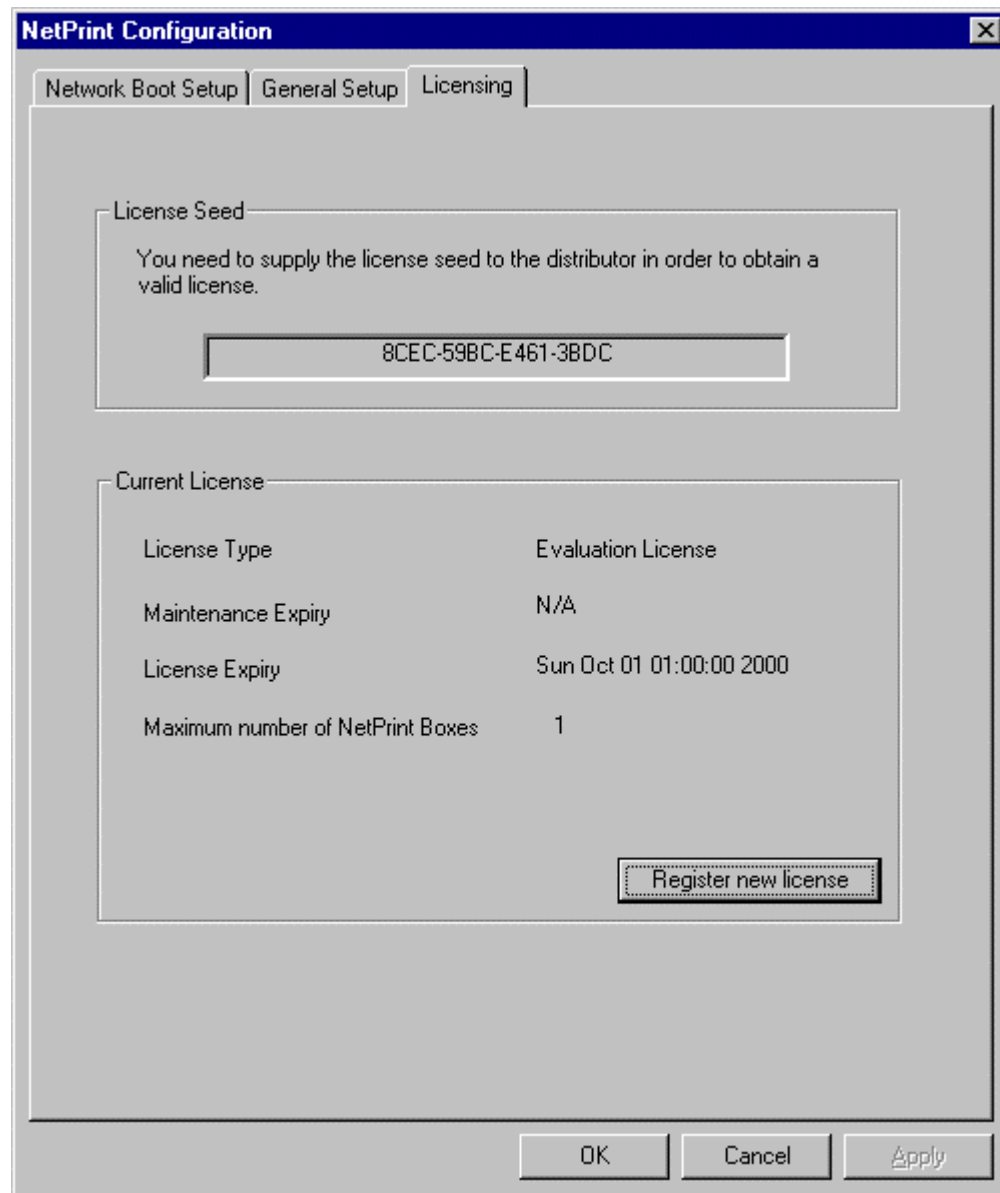
**Figure 3-4 Entering the licence code**

Similarly to above, ensure you type the code (Figure 3-4) exactly as it is sent to you, including the dashes.



**Figure 3-5 moneycpl has accepted the code**

If the code is correct, the Current license section will now reflect (Figure 3-6) your licence and the manager will be able to start when you try.



**Figure 3-6 Licence code successfully entered**

At the end of the evaluation period (for an evaluation licence), the manager will no longer start again.

### 3.3 NetPrint Manager Configuration

The NetPrint Manager configuration is split into two areas:

- ◆ Network boot server configuration
- ◆ NetPrint station configuration

Both portions of the configuration are accessed via the NetPrint Control Panel Applet.

The NetPrint stations, by default, contain only a small, network boot-kernel that loads the system software proper. The servers required (DHCP and TFTP) are included in the standard NetPrint package. For safety, these servers are defaulted off (in case there are pre-existing servers present on the network). If you wish to use the NetPrint servers, read this section for configuration information.

If you wish to use another DHCP and TFTP server, you must disable the NetPrint versions of the same. You must configure the DHCP server to assign an IP address to the NetPrint stations and also assign a TFTP server and boot file. The boot file - supplied with the software - is called syntaxis.bin. The TFTP server should serve this to the NetPrint stations when requested.

### 3.4 Network boot server configuration

The Network Boot Configuration page is shown in Figure 3-7.

The network boot servers consist of a DHCP server to assign IP addresses to the NetPrint stations (given their MAC address) and a TFTP server to download the kernel and executive to the NetPrint stations.

Most of the configuration options are present to allow the NetPrint network boot servers to be used as a DHCP server for machines other than the NetPrint stations. For the NetPrint stations, only the Domain Name and Sub-net Mask boxes need to be filled. Contact your network administrator for details of these and the other values, if required.

**NetPrint Configuration**

Network Boot Setup | General Setup | Licensing

The NetPrint server implements a DHCP and TFTP server which are required to network boot the client NetPrint stations. If you already have an assigned DHCP and TFTP server on your network, DO NOT enable this one.

☒ Enable DHCP Server    ☒ Enable TFTP Server

Common Client Options

Domain Name:

DNS Servers:

Gateway:

Subnet Mask:

MAC address	IP address
00-D0-C9-02-29-37	192.168.42.233

TFTP Kernel Image Directory:

**Figure 3-7 NetPrint Configuration, Network Boot Setup**

The main configuration task to be performed is to map MAC (Ethernet hardware) addresses to IP addresses. In order for a NetPrint station to be booted, you must supply the MAC address and the IP address that you wish to assign to the NetPrint software. To add a new mapping, click the Add MAC address button. The MAC address is printed inside the NetPrint station cabinet. You must enter the address exactly as

printed. The address must be all upper case and be grouped as shown in the example (XX-XX-XX-XX-XX-XX). The IP address must be unique on your network.

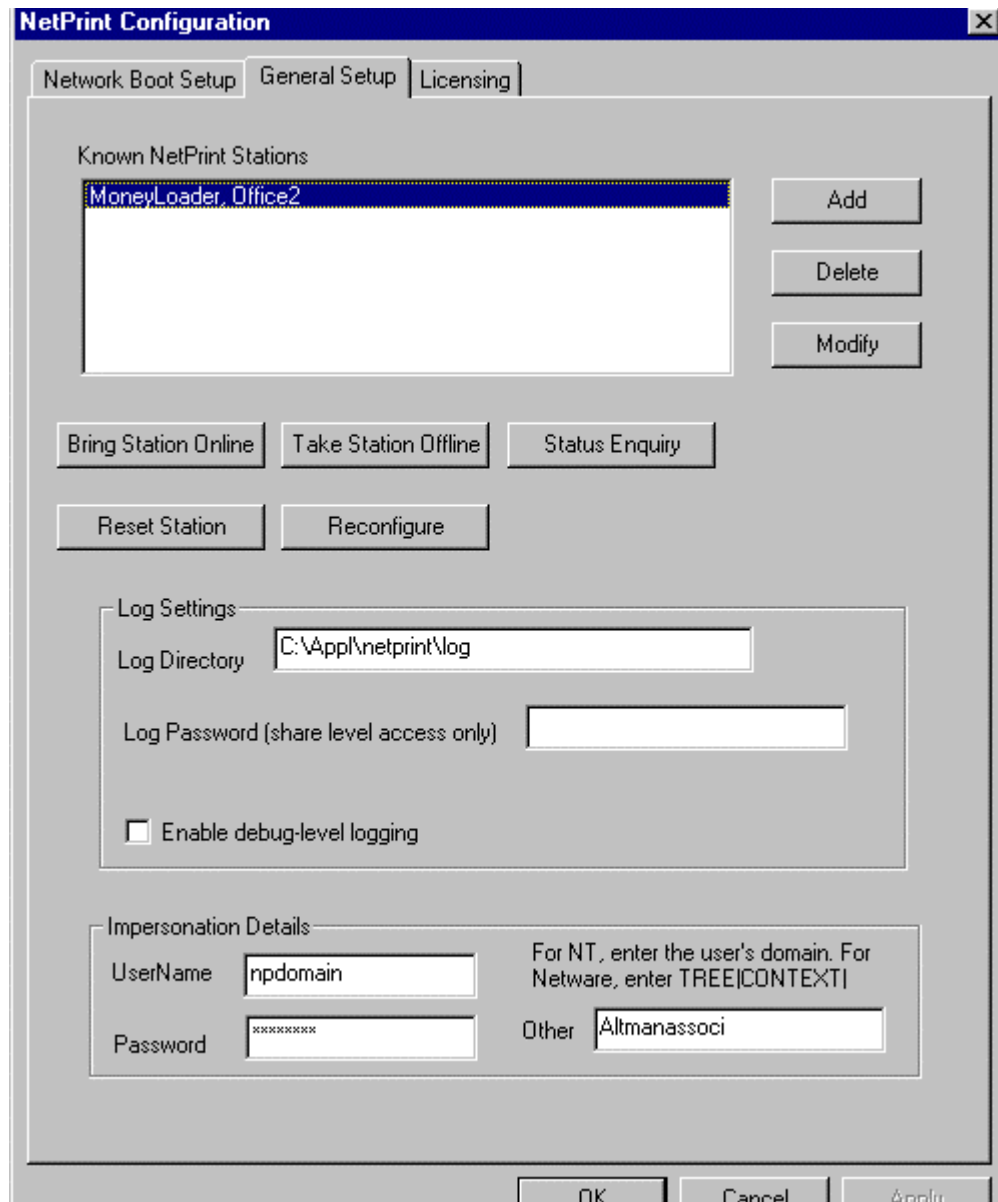
Normal rules for DHCP based booting apply. That is, if your DHCP server is on a different sub-net to those of the NetPrint stations, you must supply a gateway that will also forward DHCP/BOOTP broadcast packets. The address of this interface should be entered in the Gateway configuration box.

Configuration of the TFTP server is simpler. You must merely supply the directory name where the NetPrint station boot image may be found. By default, this will be the installation directory. If you wish to change this, enter the directory that contains the syntaxis.bin file for network booting.

### 3.5 NetPrint Station Configuration

It is worth noting explicitly that it is necessary to add a configuration block for each NetPrint station that you wish to use on the network. This configuration is entirely separate from the Network boot server configuration discussed previously. Clicking the General Setup tab at the top of moneycpl will bring up the configuration screen Figure 3-8.

The general set-up tab is split into three distinct areas. The first of these contains data about the known NetPrint stations and operations that can be performed on them.



**Figure 3-8 NetPrint Configuration, General Setup**

### **3.5.1 The Known Station List**

This list-box contains the names of the NetPrint stations that you have added to the system. The buttons to the right of the list-box allow you to add a new station, remove a station (in which case it will never be

activated) or modify its configuration. These operations will be discussed later.

The buttons below the list-box perform operations on specific NetPrint stations. You should highlight the required NetPrint station in the list box before performing any of these functions.

#### **Bring Station Online**

Stations are automatically brought on-line when the system starts. If you have taken a station off-line manually, you will need to bring it back online using this button. When a station is off-line, no user input or monies are accepted. When a station is on-line, users may interact with the station.

#### **Take Station Offline**

In a similar vein, this will take the given station off-line. No user input will be accepted.

#### **Reset Station**

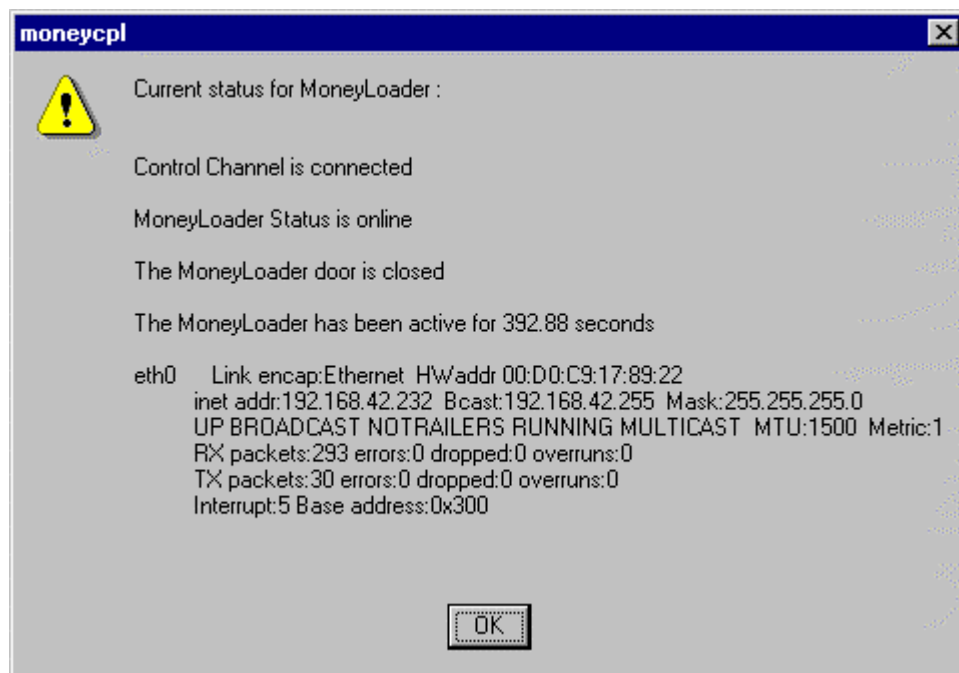
This will cause a full hardware reset of the remote station. There will be no chance of a user at the station to interact in any way with the process. Use this option with caution. In normal use, it should not be necessary to use this function unless you are upgrading the station kernel and executive files.

#### **Reconfigure**

If you have modified a station's configuration (see later), then this function will download the configuration to the MoneyLoader immediately. Otherwise, it will not be reflected until the next time that the MoneyLoader is power-cycled.

### Status Enquiry

Retrieves & displays the status for the selected MoneyLoader.



**Figure 3-9 NetPrint MoneyLoader Status Enquiry**

Current information presented is

- 1) Control channel (connected or not connected). This is the connection to the NetPrint server.
- 2) MoneyLoader status (online or offline).
- 3) MoneyLoader door status (open or closed).
- 4) Up-time for the NetPrint kernel. This is how long (in seconds) the kernel has been up for - NOT how long the NetPrint server has been connected
- 5) A dump of the current parameters for the eth0 interface (i.e. the network card). This has hardware, MAC and IP parameters listed. It's for debugging only.

### 3.5.2 Log Settings

The Log Directory indicates where the NetPrint manager log file should be stored. The file is called netprint.log and will reside in the directory specified here. If your Windows NT installation allows share level access control, then the Log Password is required from the client viewing the log. If your installation allows only user-level access-control, the password is ignored and standard RPC authentication is required to access the log.

### 3.5.3 Impersonation Details

A special user is needed (we recommend dedicating a userid to this for audit-trail purposes) to act for the updating of Pcounter user balances. This user should be set-up to have Administrator privileges on the NT Domain. Enter the **UserName** & **Password** assigned to this user. For NT, enter in **Other** the Domain. For NetWare enter in **Other** the NDS Tree where the user id is defined, the pipe (|) symbol, the context of the tree where the user exists & another pipe (|) symbol.

## 3.6 Adding a station configuration

Upon clicking the **Add** button next to the known station list box, the dialog in Figure 3-10 will be shown.

### 3.6.1 NetPrint Station Setup

In order for the NetPrint manager software to configure and respond to NetPrint station requests, the station's IP address must be entered into the first field. The second field is a short piece of descriptive text to aid operators in identifying NetPrint stations.

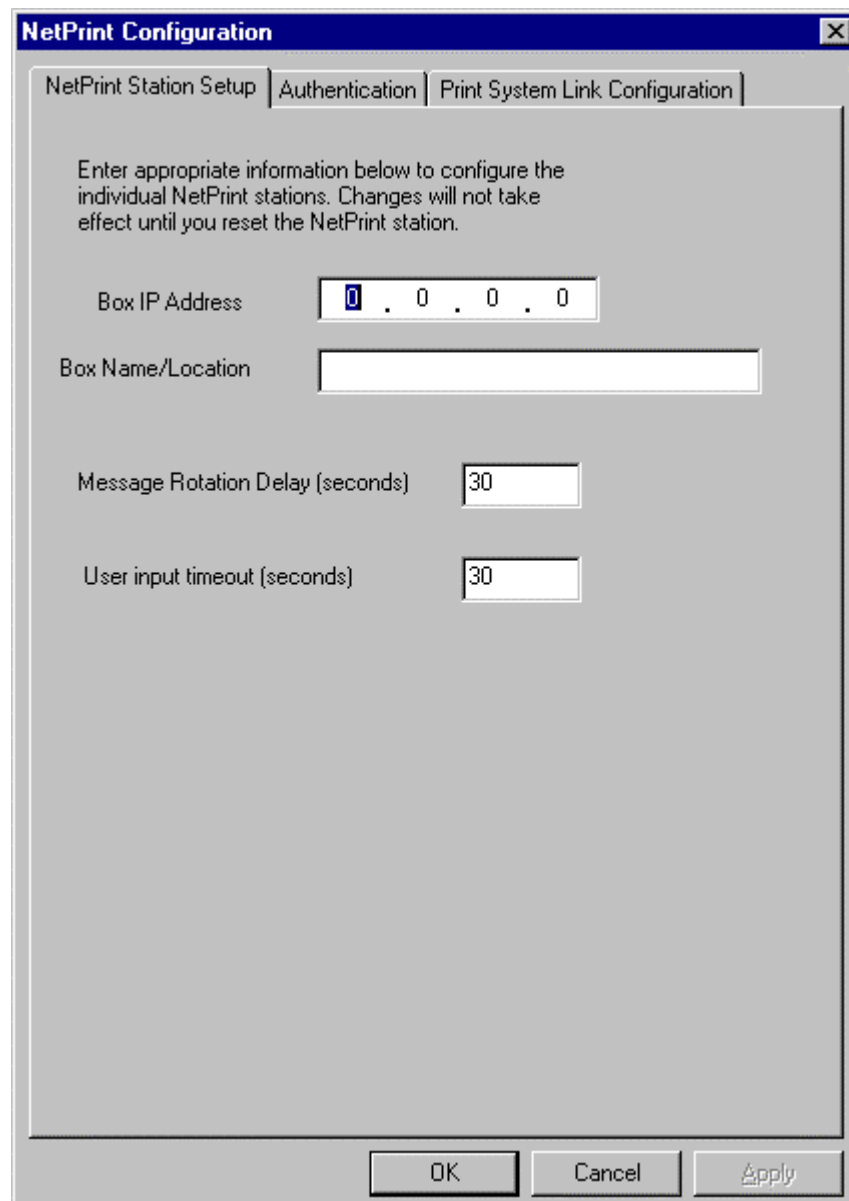
The Message Rotation Delay field is used to set how long each message remains on the screen. Acceptable ranges are 5 seconds to 300 seconds.

Messages will be covered in detail later in this chapter.

The User Input Timeout is used to determine the inactivity timeout for the NetPrint stations. For example, consider the situation of a user approaching the station and beginning to type their username. Suppose the user becomes distracted. The NetPrint station will break out of user input after the delay specified here. This value also limits the amount of



time an account stays 'open' after a valid username/password pair has been entered.



The 'NetPrint Configuration' dialog box is shown with the 'Station Setup' tab selected. It contains the following fields:

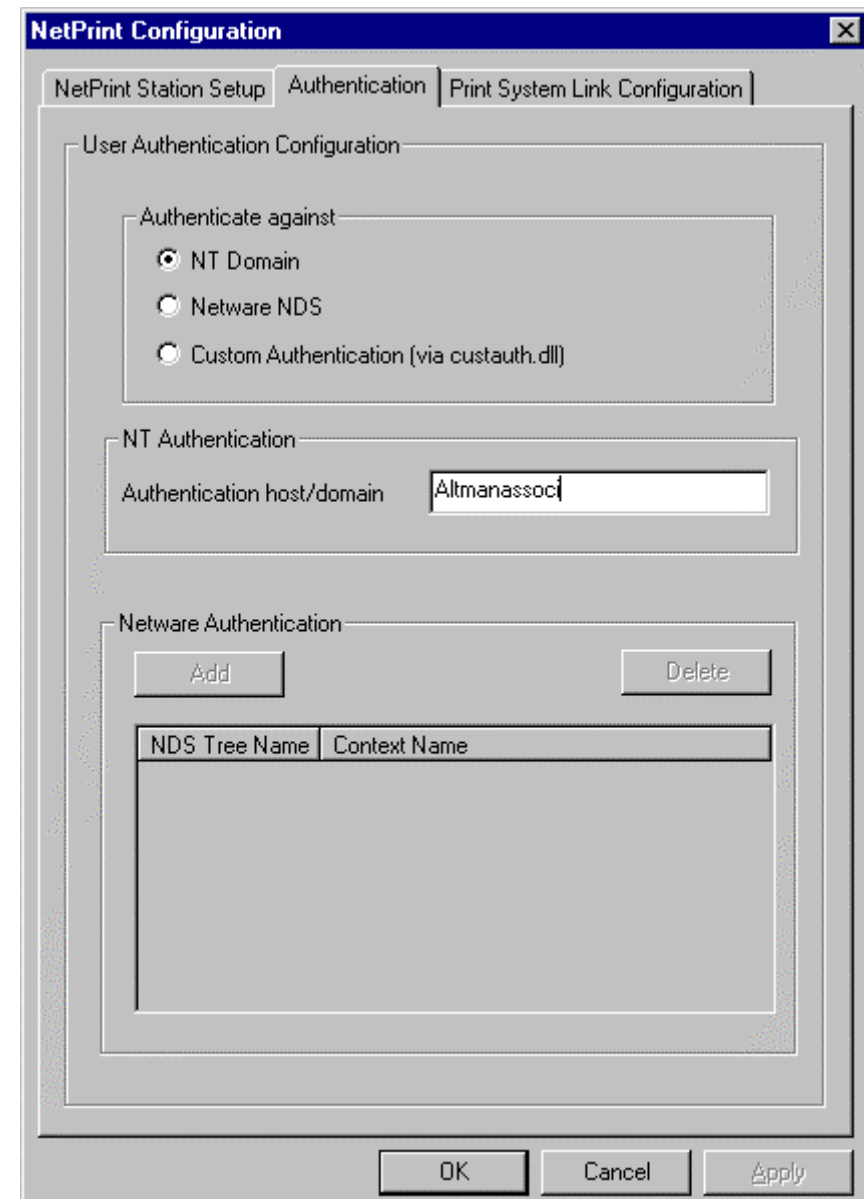
- Box IP Address:** A text field with the value '0 . 0 . 0 . 0'.
- Box Name/Location:** An empty text field.
- Message Rotation Delay (seconds):** A text field with the value '30'.
- User input timeout (seconds):** A text field with the value '30'.

At the bottom are 'OK', 'Cancel', and 'Apply' buttons.

Figure 3-10 Adding a NetPrint station

### 3.6.2 Authentication

Each NetPrint station can be configured individually to authenticate users against an NT domain or host, a NetWare NDS tree or via some custom authentication method. Each option is described below.



The 'NetPrint Configuration' dialog box is shown with the 'Authentication' tab selected. It contains the following sections:

- User Authentication Configuration:**
  - Authenticate against:** A group box containing three radio buttons:
    - ☒ NT Domain
    - ☐ Netware NDS
    - ☐ Custom Authentication (via custauth.dll)
- NT Authentication:**
  - Authentication host/domain:** A text field with the value 'Altmanassoc'.
- Netware Authentication:**
  - Add** and **Delete** buttons.
  - A table with two columns: **NDS Tree Name** and **Context Name**.

At the bottom are 'OK', 'Cancel', and 'Apply' buttons.

Figure 3-11 NetPrint station authentication



- NT Domain

Enter the name of the server or domain that will provide the authentication, in the box provided. Servers must be in the UNC form (i.e. "//ServerName").

- NetWare NDS

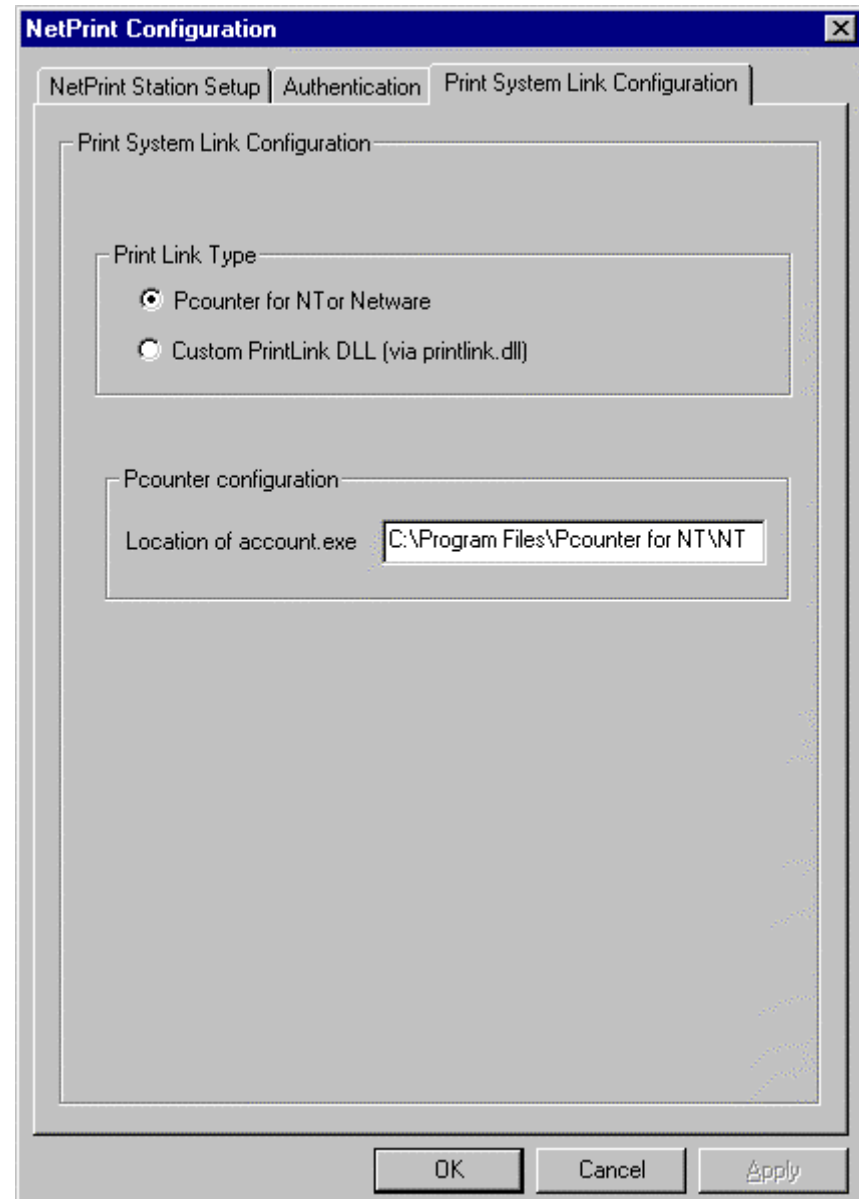
In the NetWare Authentication panel of the configuration options, you may enter a list of NDS trees and contexts. These will be searched, in the order you provide them, to authenticate a given user. Careful crafting of the entries here for each NetPrint station will greatly reduce the time necessary to authenticate users on a large NetWare installation.

- Custom Authentication

An end-user may create a custom authentication DLL that will be used to authenticate users at the NetPrint stations. This DLL must be called custauth.dll and full details of its public interface are given in a separate guide.

### **3.6.3 Print System Link Configuration**

This tab (Figure 3-12) allows a choice between custom updating & Pcounter - for either NT or NetWare. The NetPrint software interacts closely with Pcounter to allow account balance enquiries and updates. The Pcounter Install Directory needs to contain a correctly configured copy of account.exe, the Pcounter administration program.



**Figure 3-12 Print System Link Configuration**

### **3.6.4 Configuring Messages**

Since each NetPrint station will be idle for most of its life, it is possible to configure each station to display a set of messages continuously. These messages are configured via the Messages tab of the NetPrint

station configuration. This tab is only available by selecting an existing NetPrint station and Modifying its configuration.

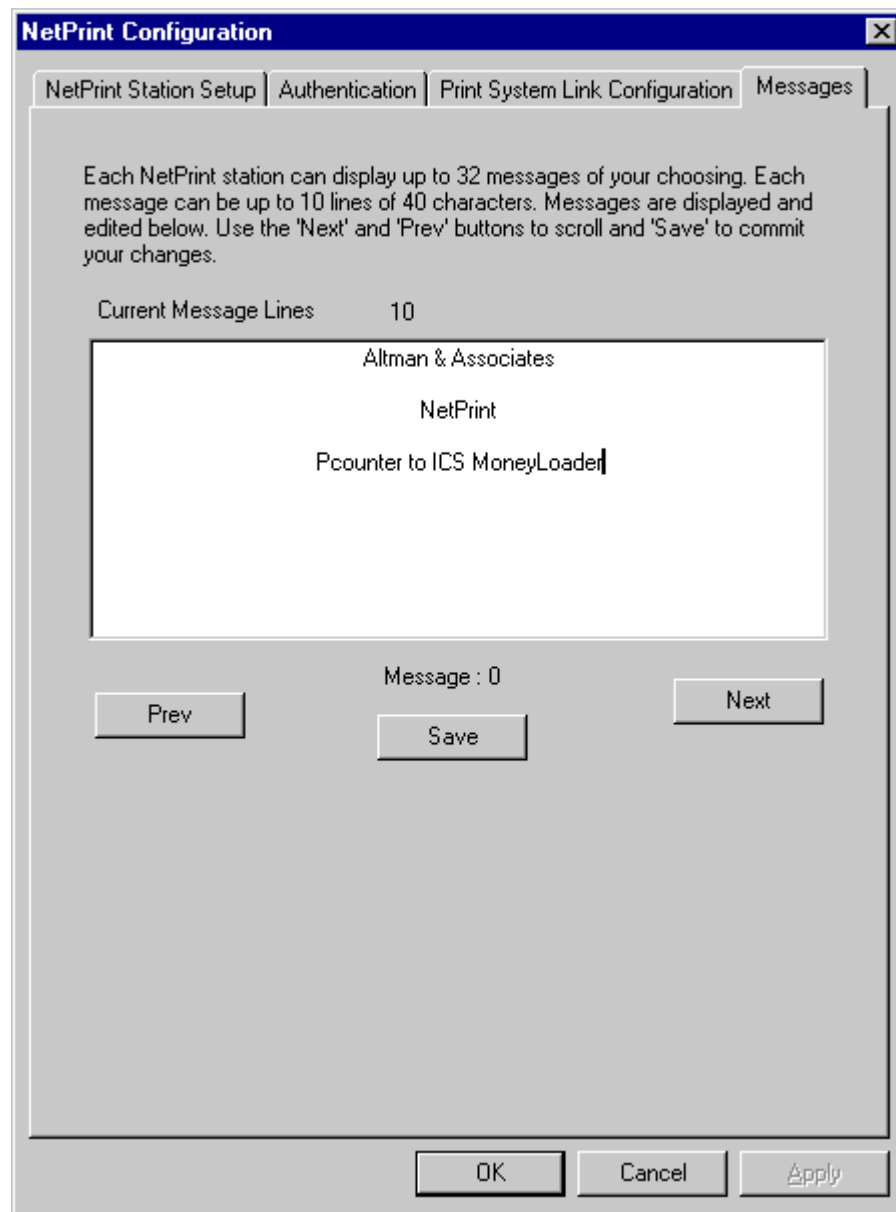


Figure 3-13 Messages

Each message consists of up to ten lines of free-form text, each no more than 30 characters in length. You may configure up to 32 messages per MoneyLoader.

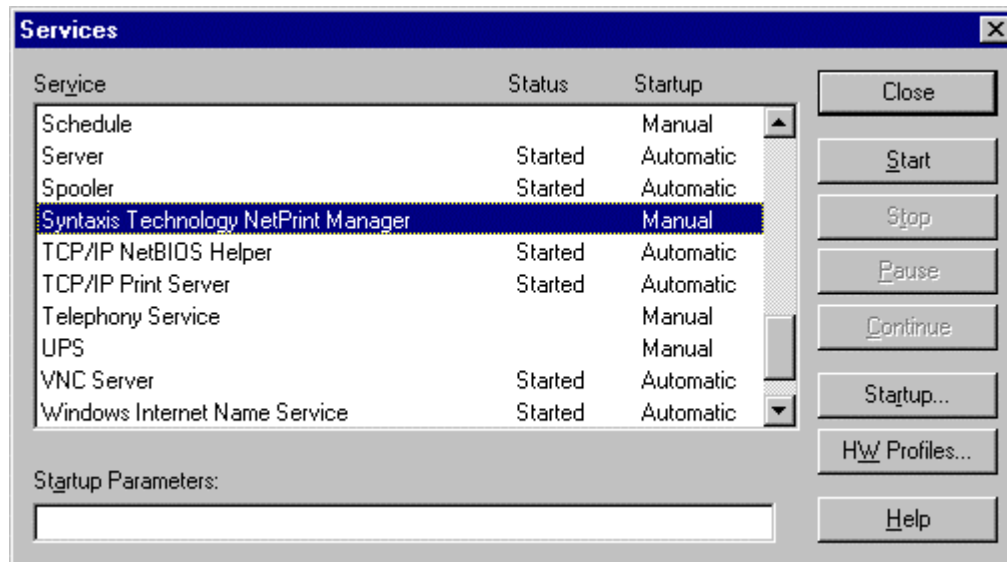
Blank messages are summarily ignored.

Navigate through the messages with the Prev and Next buttons. The currently displayed message number is shown below the entry pane. If you wish to modify a message, type the details in the edit box provided. Ensure that no more than 10 lines are added for any given message (see the counter above the entry pane). When you are happy with a given message, hit the Save button to commit the changes.

A NetPrint station will not reflect the new messages until it is either rebooted or reconfigured. See previous sections for details.

### 3.7 Service Configuration

The NetPrint Manager runs as an NT system service. In this way, it is not necessary for someone to log in to the console of the NT machine to start the NetPrint system. You may set the NetPrint Manager service to start automatically at system boot time or so that it needs to be manually started each time the system boots. For administrative ease, it is recommended that the service be set to auto-start.



**Figure 3-14 The Services Control Panel Applet**

#### 3.7.1 Setting the service Startup Type

Go to Control Panel and double click the Services icon. Find the **Syntaxis Technology NetPrint Manager** entry in the list in the left pane of the applet.

Highlight this entry and click the **Startup** button (see Figure 3-14). You will be presented with the service Startup configuration, as shown in Figure 3-15.



**Figure 3-15 Startup Type**

The default configuration shows that the service must be started manually at each boot. If you wish to make the NetPrint service start automatically, select the Automatic start-up type. By default, the service does not require any extended privileges and can happily run under the LocalSystem account (Log on as **System Account** checked). If, however, your authentication system (see next chapter) requires an authenticated user, you should enter that user's details in the applet and select Log on as **This Account**. Once you have completed the configuration, click the **OK** button. Then, click on the **Start** button to start the service for the first time. There should be no errors produced and the status should change to **Started**.

## Chapter 4 NetPrint Logging

The NetPrint software logs all activity to the netprint.log file. A Control Panel utility (nplogcpl - Figure 4-1 shows its icon) is provided to access this & provide some custom reporting.

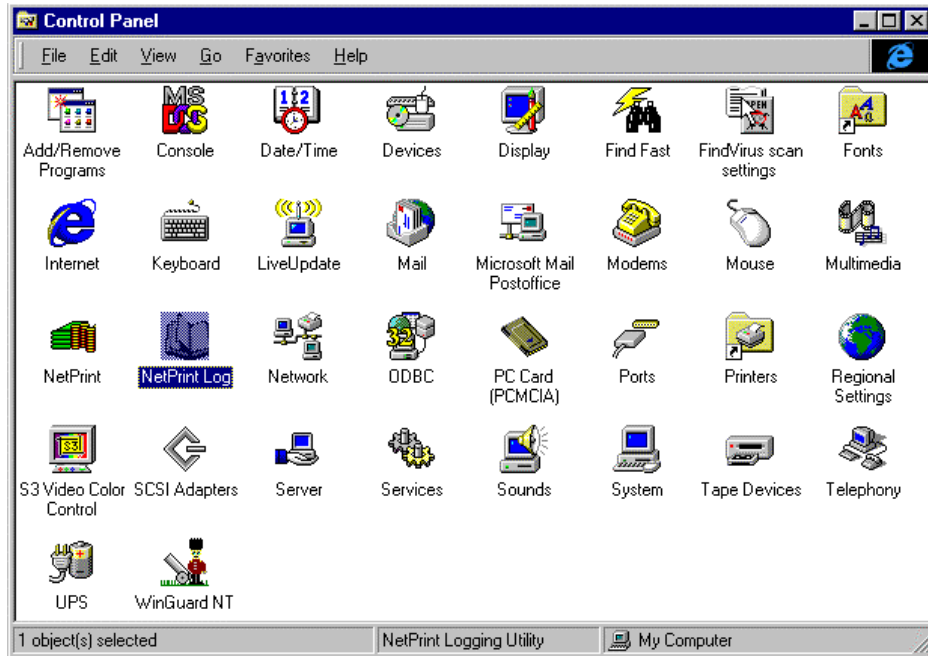


Figure 4-1 NetPrint Log Control Panel Applet

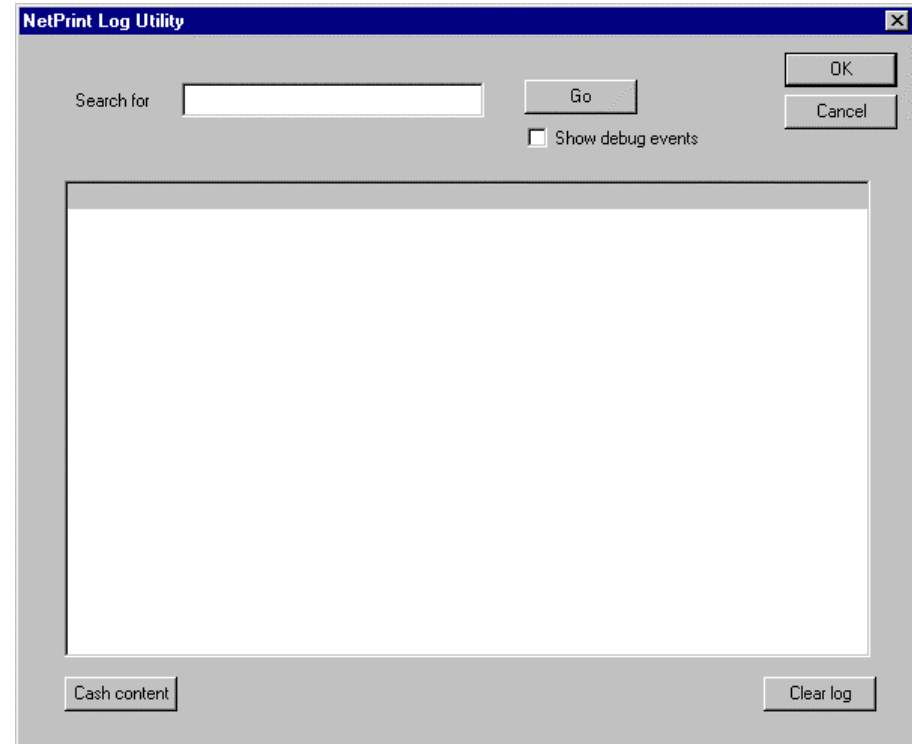


Figure 4-2 NetPrint Log utility

### 4.1 MoneyLoader entries

When the NetPrint log Utility displays (Figure 4-2), a value to look for can be entered in the **Search for** field; or it can be left blank to display all. Then after clicking **Go**, a list of entries (Figure 4-3) will be displayed.

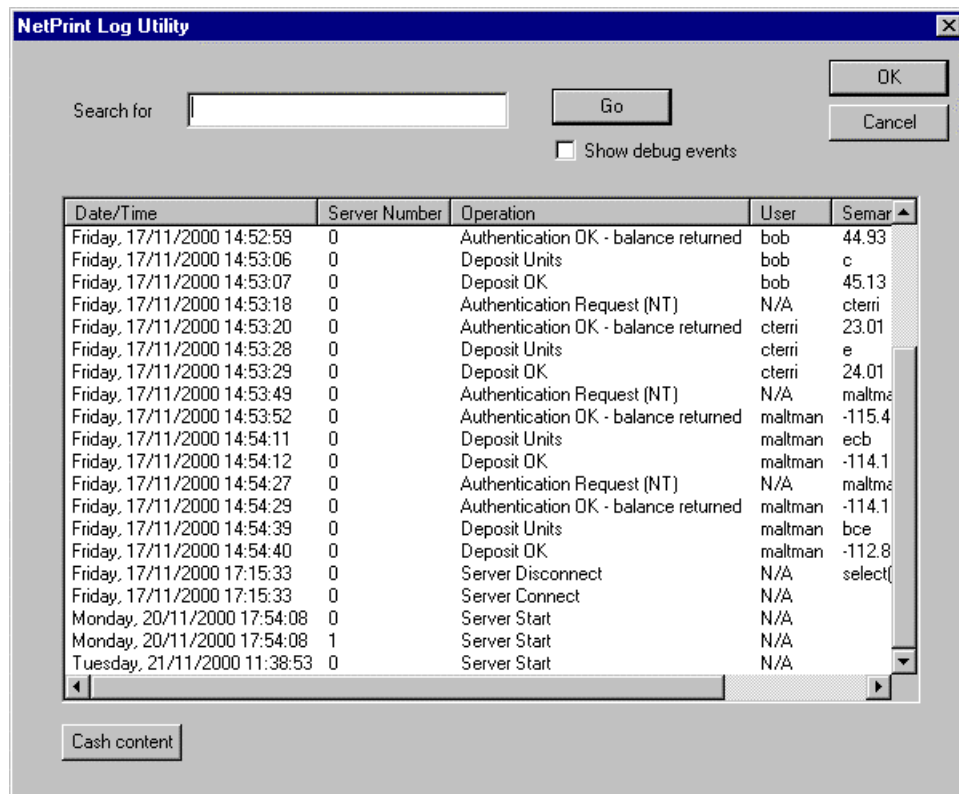


Figure 4-3 Display MoneyLoader entries

## 4.2 MoneyLoader Cash content

Again, when the NetPrint log Utility displays (Figure 4-2/Figure 4-3), the **Cash Content** button can be clicked. This prompts for the logical ID for the MoneyLoader required (Figure 4-4)

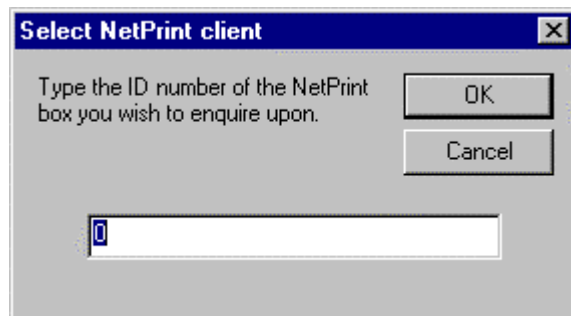


Figure 4-4 Specify MoneyLoader ID

After entering a valid logical id (starting at zero for the first MoneyLoader defined) a list of the totals of each acceptable coin or note that should be present in the specified MoneyLoader (Figure 4-5) is displayed.

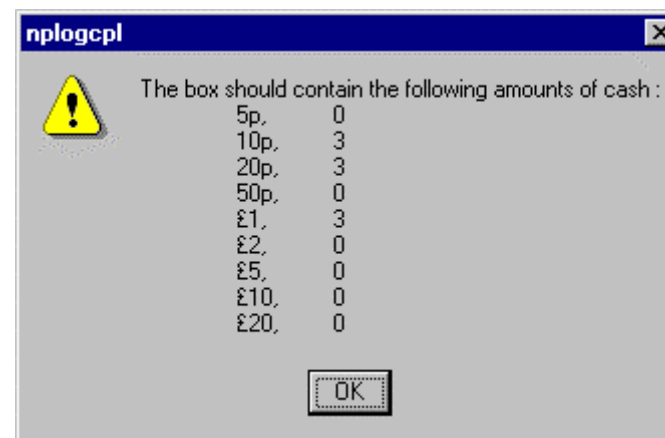


Figure 4-5 MoneyLoader cash content

After clicking OK, a message is displayed, asking if the values should be transferred to the clipboard for users to place into another document (Figure 4-6).

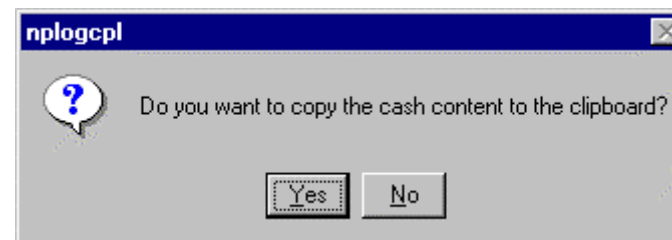


Figure 4-6 Copy cash content to the clipboard?

## 4.3 Clear the Log

The whole log can be cleared - please take care to ensure you have a backup for audit purposes - by clicking the Clear log button (Figure 2-7). After clicking, a warning message is displayed in case you wish to cancel, otherwise the log is then wiped clean.

## 4.4 Pcounter reports

In addition to the above, the Pcounter Administration utility (Padmin) can be used to obtain a report of the total received by running the Deposit report. Also, a print history is available for individual users, including their deposits, in case of queries.

## 4.5 Emptying the MoneyLoader

The emptying of the MoneyLoader requires you to physically switch off the alarm, open the door & swap the Notes & Coin boxes inside for the spare empty ones (see sections 5.2 through 5.4).

To ensure the integrity of the Cash content display, you should take the MoneyLoader station offline before opening it to prevent any extra money from being deposited. Then run the Cash content & save the values *before* opening the door, since the door open transaction "resets" the Cash content routine.

This also means that, should you need to open the MoneyLoader door for any other purposes, you should also run a Cash Content first. This should then be saved, to be manually added to the one you do when you next empty the MoneyLoader.

## Chapter 5 MoneyLoader Hardware

### 5.1 Technical Specifications.

The Money Loading Station consists of a secure 2mm steel cabinet with five point locking bar for added security.

Dimensions 597 x 525 x 350 @ 35kg

Wall Fixing is achieved with Mounting Bracket.

User interface is via a ¼ VGA Backlit monochrome LCD and panel mount Qwerty style Keyboard.

Money Handling is achieved via the following options: -

- ◆ Coins – NRI G1300 6 coin Electronic mechanism Pre-set with 10p 20p 50p £1 £2. With secure Lockable Cash Box (capacity of cash box approx. 1500 x £1 coins)
- ◆ Notes – Diversified Systems Vertical Vault Note Validator. Programmed for £5 £10 £20 notes with lockable note box. (Capacity of note box 600 notes)

The electronic interface for money transactions are handled by the STD Serial Data Board Vr1.5.

The main Engine of the NetPrint station is an Embedded 486 PC (Advantech PCM-4823/L) with 16 MB Ram and onboard NE2000 compatible Ethernet controller with 10Base-T media access (Media Access converters are available for 10Base-2 networks)

It is recommended that the NetPrint Station be powered via a 240v non-switched fused spur rated at 5amp.

### 5.2 Locking Cashbox Instructions

#### 5.2.1 Remove Cashbox

1. To unlock the cash box mechanism, move the sliders on the top of the cashbox, (either side of the coin entry mouthpiece) towards the front of the cashbox, until it is locked in position. The coin mouthpiece is now closed.

2. Insert the key into the lower left-hand lock.
3. Turn lower left-hand key anti-clockwise ¼ turn.
4. The cashbox can now be lifted out.

(Note: This can be very heavy when full of money)

#### 5.2.2 Open the Cash Box

1. Leave the left-hand key in the open position in its lock.
2. Insert the upper centre key and turn to unlock and open the cash box.
3. Remove the Cash

#### 5.2.3 Resetting the Cashbox

1. Inside the top of the cashbox is a metal bar on a spring release assembly.
2. Place the box on its end and take hold of the external handle with your left hand.
3. With your right hand inside the box take hold of the metal bar and Pull it away from the top of the box to release slider mechanism.
4. The sliding locking plate should fall back. The coin mouthpiece is now open.
5. Close the lid and turn upper centre key anti-clockwise ¼ turn.
6. Remove the upper centre key

#### 5.2.4 Replacing the Cashbox

1. Turn lower left-hand key a fraction clockwise to reveal the end of the locking arm. NOTE not a full ¼ turn
2. Place the cashbox into the cashbox housing.
3. Turn lower left-hand key clockwise to secure to the housing.
4. Remove the key.

## 5.3 Notes Box Instructions

### 5.3.1 Remove Notes Box

1. To release the notes box mechanism, move the lower black slider to the right.
2. The notes box can now be pulled forward & out.

### 5.3.2 Open the Notes Box

1. Insert the key and turn to unlock and open the notes box.
2. The notes are held to the roof of the box by a sprung plate, which needs to be pulled down
3. Remove the Notes.

### 5.3.3 Replacing the Notes Box

1. Lock the notes box & remove the key.
2. Slide the notes box into the note reader & push until the slider clicks to show it is set.

## 5.4 Setting the Security Alarm

The Money Loader comes with a built-in alarm which, when set, is activated on the opening of the front door.

The alarm is set by means of a Key-operated switch on the top right hand corner of the front door.

Next to the key switch is a small red indicator light.

With the door closed and the red light on, the alarm is **NOT** set.

To set the alarm Close the front door and turn the key-switch until the light goes out. **The alarm is now set.**

To disengage the alarm, turn the Key-switch until the light comes on. Make sure this is done before opening the door.

The alarm is powered by a standard P3 9v battery.

### 5.4.1 Replacing the battery

The battery compartment is located inside the money loader towards the bottom right hand rear corner of the box. (Towards the rear of the Note

cash box). The battery compartment can be removed by the use of a small flat blade screwdriver to prise open the compartment.

### 5.4.2 When to replace the battery

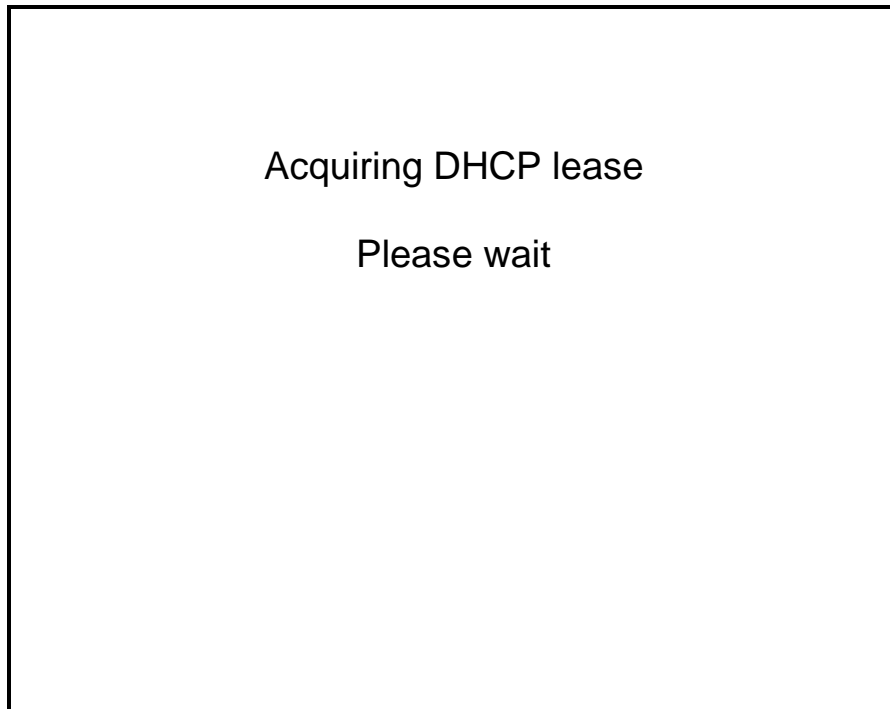
When the door is closed, the alarm not set and the red light is off.



## Chapter 6 MoneyLoader Displays

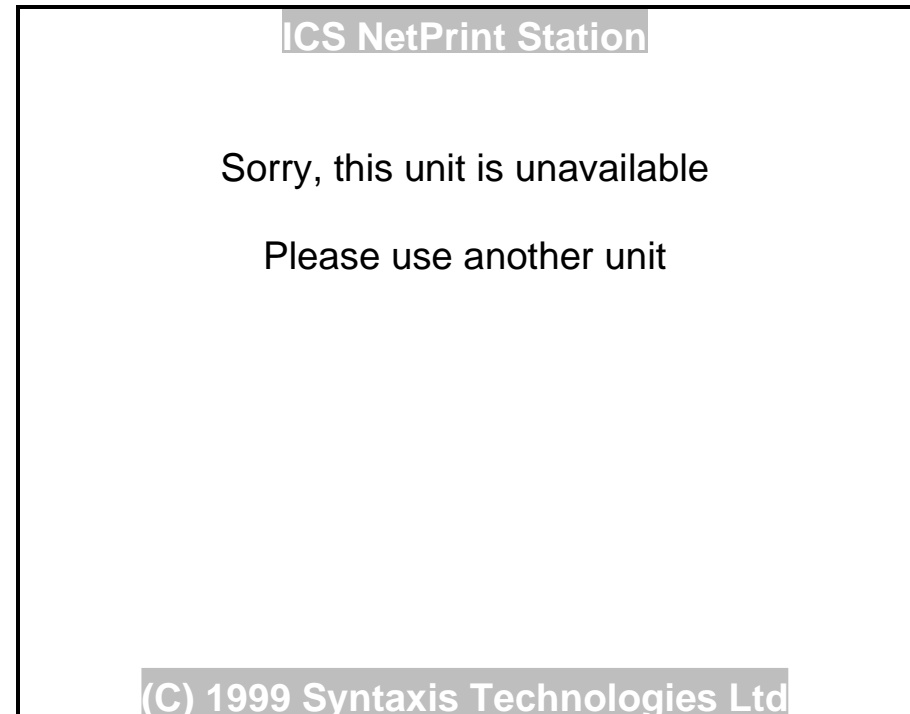
When the MoneyLoader is first powered on, the LCD will flicker but not display anything until the TFTP server has downloaded its boot-file (syntaxis.bin) program.

Then the LCD will show a message (Figure 6-1) indicating the program is re-acquiring its DHCP lease.



**Figure 6-1 Boot-file loaded**

If the MoneyLoader is successful in re-acquiring its DHCP lease, the following (Figure 6-2) is displayed. This indicates that the MoneyLoader is connected to its NT controller but that it is offline.



**Figure 6-2 Loaded but offline**

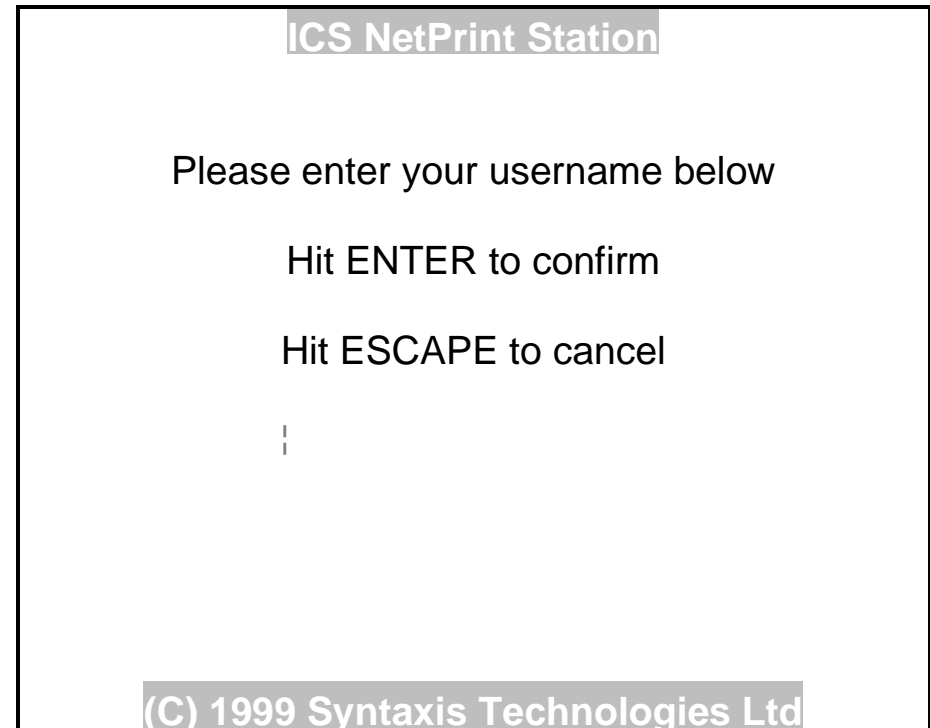
At power-up, this stage usually lasts for about 30-60 seconds before the MoneyLoader automatically goes online.

If the MoneyLoader has been taken offline from the NetPrint Control Panel applet, then it will stay in this state until it is brought back online.



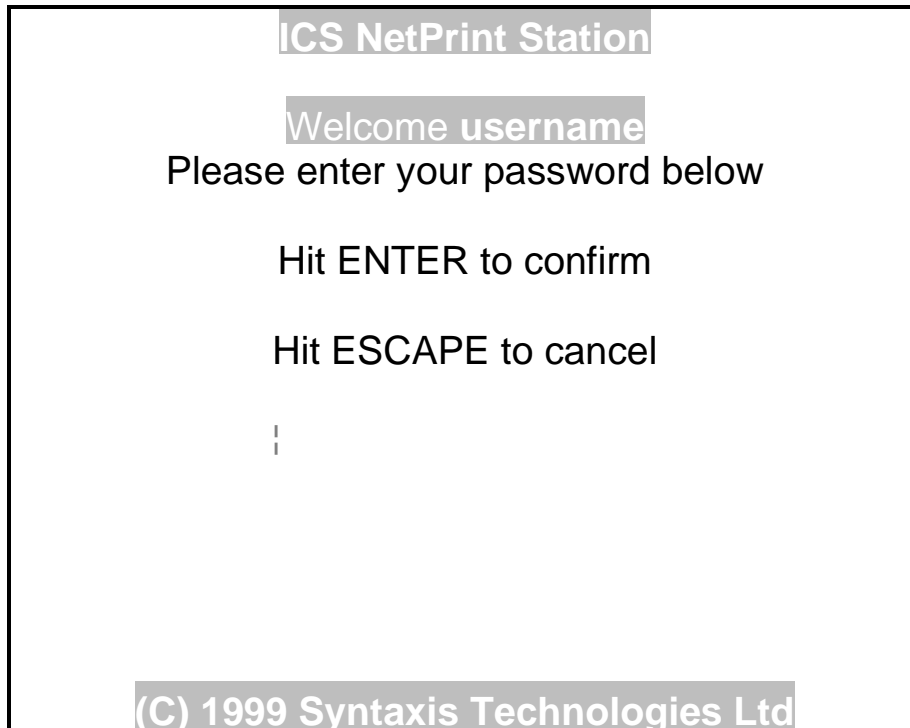
**Figure 6-3 Online**

When the MoneyLoader is online & ready to be used, Figure 6-3 is displayed on the MoneyLoader. This is the starting point for the Users when wanting to deposit money to their printing accounts.



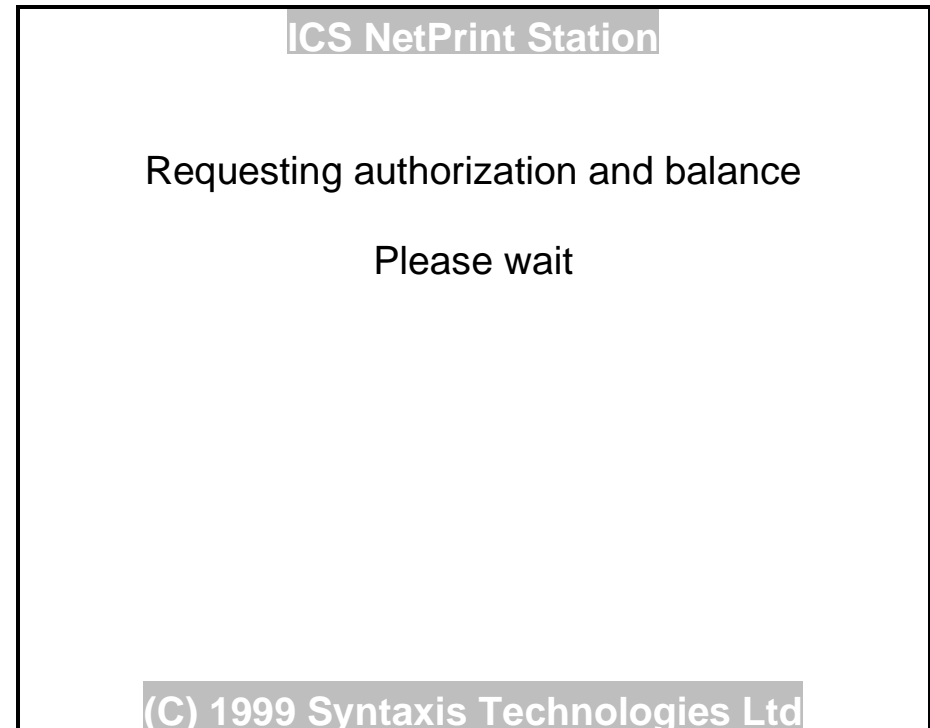
**Figure 6-4 Awaiting username entry**

After pressing any key to start a transaction, the screen (Figure 6-4) is displayed prompting for entry of the user's username.



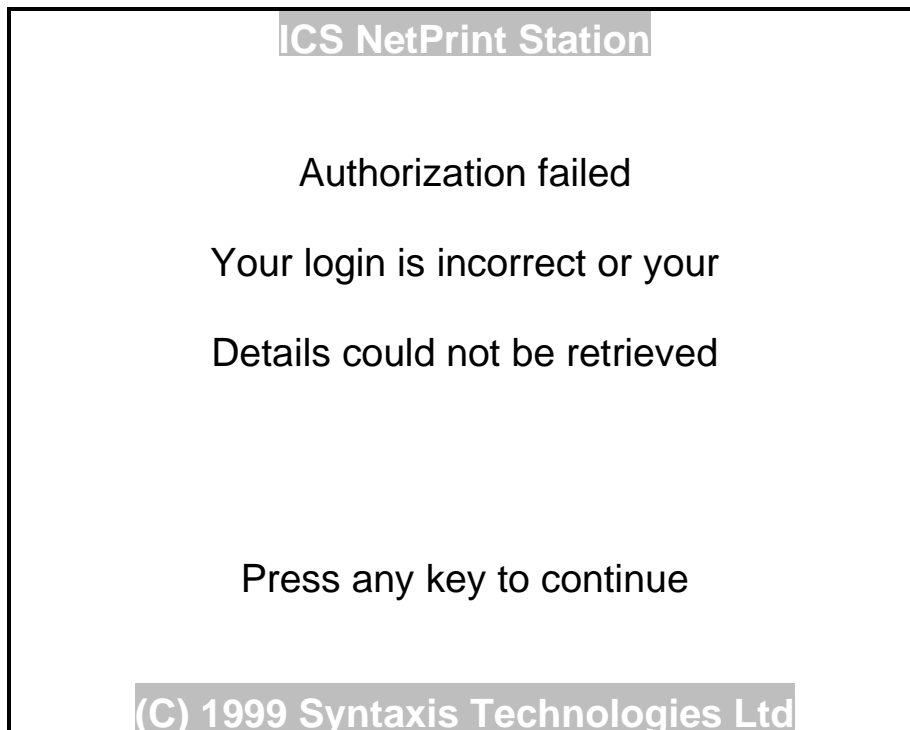
**Figure 6-5 Awaiting password entry**

Next (Figure 6-5), the user's password is prompted for.



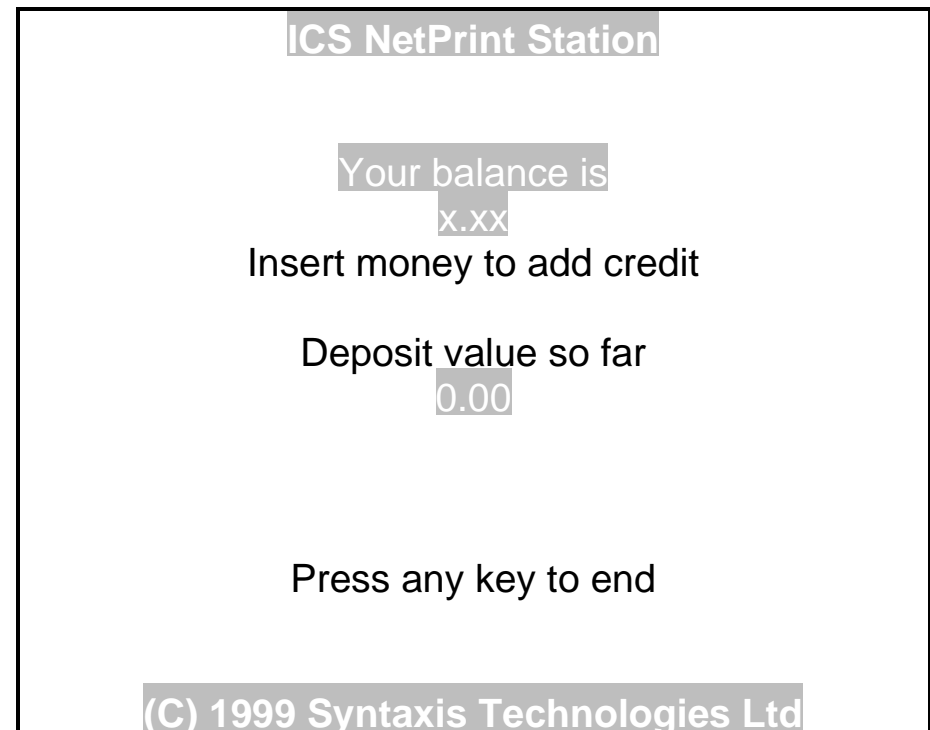
**Figure 6-6 NetPrint is checking username/password**

The LCD momentarily displays Figure 6-6, while it checks the username & password to see if they can be authenticated.



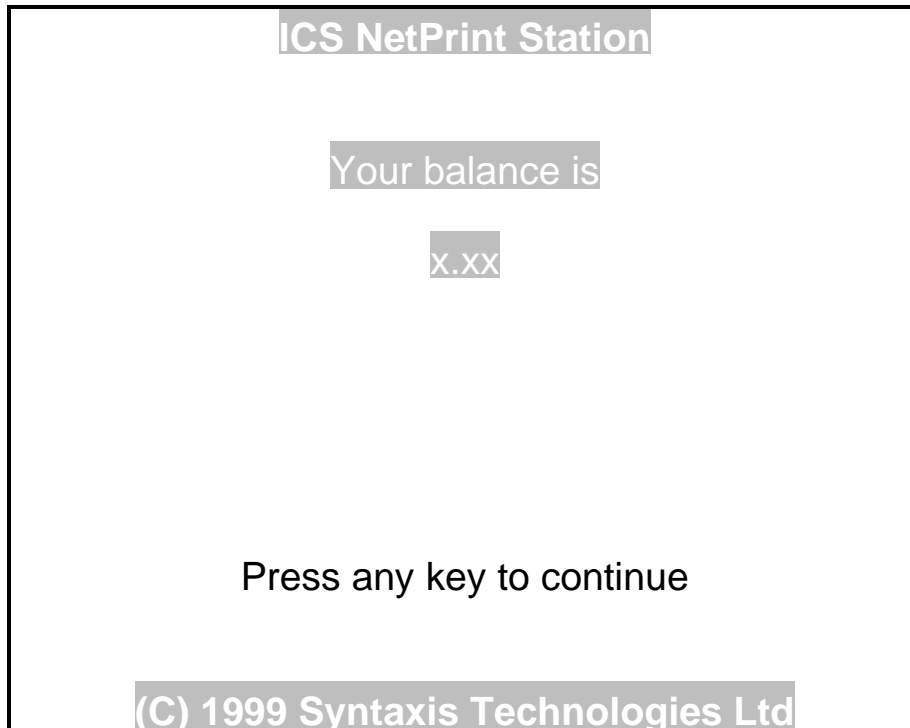
**Figure 6-7 Invalid username/password**

If either the username or password is invalid or otherwise unavailable to login, then Figure 6-7 is displayed.



**Figure 6-8 Valid login, enter money**

If the username & password are valid & can be authenticated, then a screen (Figure 6-8) is displayed showing current printing balance and amount so far deposited (this increments with each coin or note added).



**Figure 6-9 Amount deposited**

After finishing depositing money and either pressing any key to show the transaction is finished or the "no-usage" timer expiring, then the screen (Figure 6-9) is displayed showing the user's new balance.

## Chapter 7 Index of Screen-shots

Figure 2-1 Initial NetPrint install screen .....	2
Figure 2-2 NetPrint Licence Agreement.....	2
Figure 2-3 Select NetPrint Directory .....	3
Figure 2-4 Whether to backup current NetPrint files .....	3
Figure 2-5 Select NetPrint backup directory .....	4
Figure 2-6 Select NetPrint Group-name.....	4
Figure 2-7 NetPrint set-up choices completed.....	5
Figure 2-8 NetPrint successfully installed.....	5
Figure 3-1 Selecting the NetPrint Control Panel Applet .....	6
Figure 3-2 Selecting the NetPrint server .....	6
Figure 3-3 NetPrint configuration, Licensing.....	7
Figure 3-4 Entering the licence code .....	7
Figure 3-5 moneycpl has accepted the code .....	7
Figure 3-6 Licence code successfully entered .....	8
Figure 3-7 NetPrint Configuration, Network Boot Setup.....	9
Figure 3-8 NetPrint Configuration, General Setup.....	10
Figure 3-9 NetPrint MoneyLoader Status Enquiry.....	11
Figure 3-10 Adding a NetPrint station .....	12
Figure 3-11 NetPrint station authentication.....	12
Figure 3-12 Print System Link Configuration .....	13
Figure 3-13 Messages.....	14
Figure 3-14 The Services Control Panel Applet.....	15
Figure 3-15 Startup Type.....	15
Figure 4-1 NetPrint Log Control Panel Applet .....	16
Figure 4-2 NetPrint Log utility .....	16
Figure 4-3 Display MoneyLoader entries .....	17
Figure 4-4 Specify MoneyLoader ID.....	17
Figure 4-5 MoneyLoader cash content .....	17
Figure 4-6 Copy cash content to the clipboard? .....	17

Figure 6-1 Boot-file loaded.....	21
Figure 6-2 Loaded but offline .....	21
Figure 6-3 Online.....	22
Figure 6-4 Awaiting username entry .....	22
Figure 6-5 Awaiting password entry.....	23
Figure 6-6 NetPrint is checking username/password.....	23
Figure 6-7 Invalid username/password .....	24
Figure 6-8 Valid login, enter money.....	24
Figure 6-9 Amount deposited .....	25