

# Kyocera Classic Universal Printer Driver

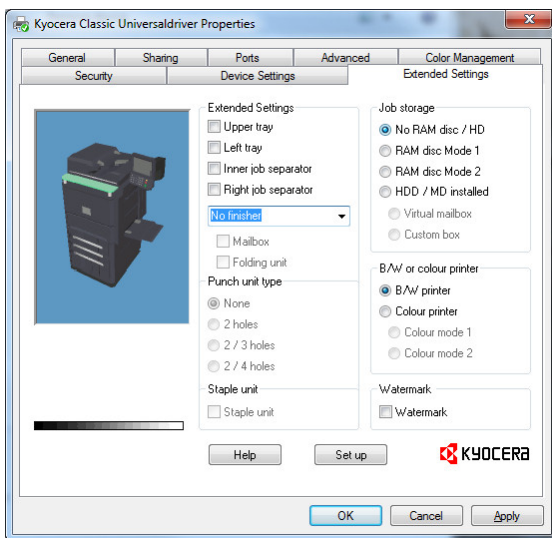
## Tips, hints, and issues

Before you start using the Kyocera Classic Universal Driver you should study this document to learn some specific issues of this driver.

## Properties

Tab: Extended Settings

After installing the driver you have the choice to set-up the finisher of the print driver.

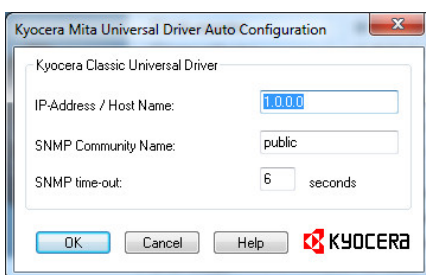


You can set-up the print driver with the finisher options you like to use or the user should use only.

In addition you have the possibility to set-up the finisher options of the print driver using the 'Auto Configuration Feature'. To do so click the button 'Set-up'. You will see a new Window. For more information see below.

After auto configuration of the print driver you have the possibility to deselect finisher options which are not needed.

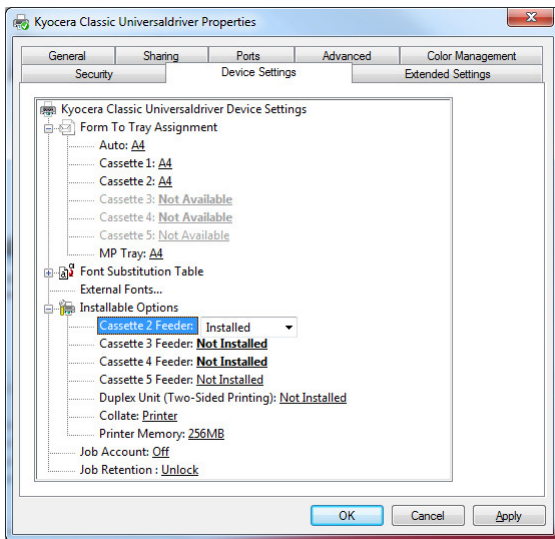
'Watermark' is an additional selectable feature.



'Auto Configuration' asks you for the IP address / Host name, SNMP community name, and the SNMP time-out. If all values are correct click 'OK'. The print driver will query the printer if possible and set-up the settings of the finisher tab only.

## Properties

### Tab: Device Settings



‘Paper Feeder:’ and ‘Duplex Unit (..):’ should be set-up at installation time (Vista and newer). If not please make the correct settings here.

‘Printer Memory:’ please do the choice that fits best to your printer.

#### Collate: (PCL driver only)

For collating copies of a multiple page print job there are two possibilities.

#### Printer (im Drucker)

Using the collate feature you must enable the RAM disk of the printer or install a HD/MD drive to your printer. This feature will decrease the size of the print-job.

#### Programme (vom Programm)

Some printers do not allow RAM disk or the usage of a HD/MD disk. In this case you can use the extended print functions of Windows. Several programmes support this software collate feature. This feature will increase the size of the print-job.

#### Attention

Some programmes cannot handle ‘Copy Collate’ if you print out one page only. In this case no copies will be printed out. To solve this problem unselect ‘Collate’-feature.

**Job Account:**  
You can decide whether the user can/must use 'Job Accounting' or not.

**OFF**  
The user can not use Job Accounting.

**On**  
The user can use Job Accounting without any limitations.

**Lock**  
First the administrator set-up a specific Job Accounting Number in 'Printing Preferences...' using the user account; ('Job Account: On'). After setting-up the 'Job Accounting Number' the admin can lock this entry; ('Job Account: Lock'). The user can not change this number without having admin rights.

**Job Retention:**  
Similar to 'Job Account' the admin can lock the entries of 'Job Retention'.

**Unlock**  
The user can use Job Retention without any limitations.

**Attention**  
'Job Retention' is only available if a RAM- or HD/MD-disk is installed/enabled.

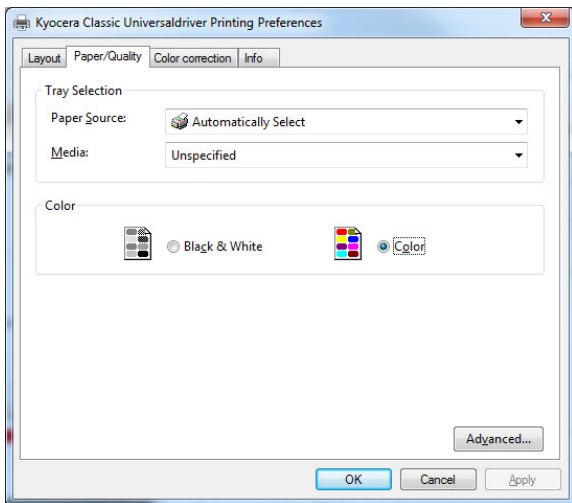
**Lock**  
First the administrator set-up Job Retention in 'Printing Preferences...' using the user account; ('Job Retention: Unlock'). After setting-up the 'Job Retention' for the user the admin can lock the 'Job Retention' tab; ('Job Retention: Lock'). The user can not change these settings without having admin rights.

**Halftone Matrix**

If the shape of grayscale is too dark you can change the halftone matrix of the rendering module. This feature is valid only for the 'HP-GL/2' mode.

# Printing Preferences

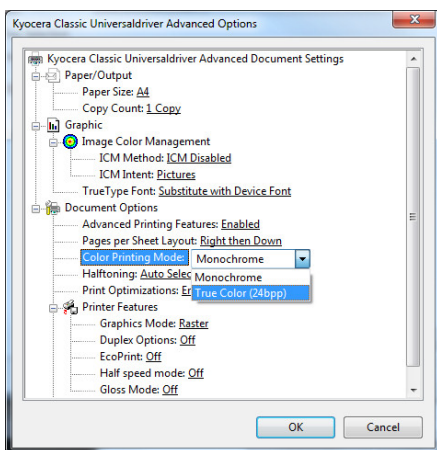
Tab: Paper/Quality (Colour printers only)



## Paper/Quality

If you switch the print driver from Monochrome to Colour, there is a chance that the printer still prints b/w instead of colour.

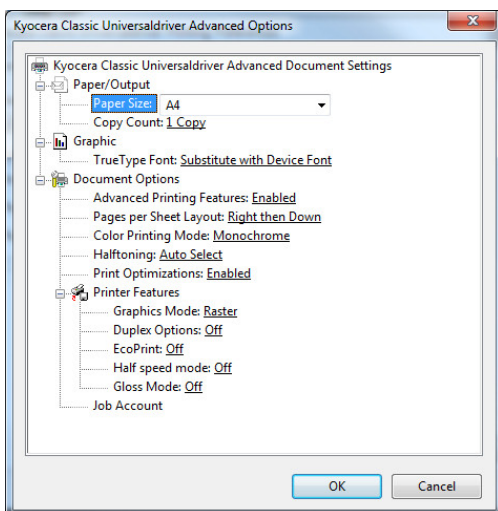
In this case click the button 'Advanced...' and do the settings shown below.



Move to 'Color Printing Mode:' (Farbdruckmodus:) and switch the setting to 'True Color (24bpp)'.

To confirm the setting click 'OK'.

Window: Advanced...



## Graphics Mode: (PCL driver only)

If you have problems getting a correct print-out of a specific document try to use another setting of 'Graphics Mode:' (Grafikmodus:). There are two choices, 'HP-GL/2' or 'Raster'.

In most cases switching the graphics mode will help.

## Duplex Options

With this feature you can control the page order if you use duplex (Vista and newer)

Off Page order for 4 pages print job is as follows:  
Sheet 1 -> pages 4 / 3 -> pages 2 / 1

Reverse page

Page order for 4 pages print job is as follows:  
Sheet 1 -> pages 3 / 4 -> pages 1 / 2

No blank page

In some cases an additional blank page will be printed-out. This setting avoids to print the additional page, if possible.

Both Both settings, 'Reverse page' and 'No blank page', will be active

## EcoPrint:

This setting reduces the toner consumption but also the print quality. This setting is good for draft print-outs.

## Half Speed mode:

Some printers support this feature. This feature reduces the print speed and the print noise and increase the print quality.

## Halftone matrix: (PCL driver only)

If the shape of grayscale is not smooth you can change the halftone matrix of the printer.

This feature is valid for new models only.

## Job Setting: (KPD L driver only)

With this feature you can force 'copy collate' if the programme does not support 'copy collate'.

The printer needs to have a RAM-/HD-disk.

Printer Default Printer settings will be used.

Collate Copy collate will be used.

None Standard copy will be used.

## Scale to Page Size: (KPD L driver only)

With this feature you can scale your master to another size for print-out; Letter, A4, and A5.

## KyoControl

The Kyocera Classic Universal Driver (PCL) is designed to use with KyoControl. Several informations will be send within the print-job like user name, job name, etc. There are some points you must take care.

### User Name

The user name will be taken from the login name of Windows. To get the valid name you must open 'Printing Preferences...' (Druckeinstellungen...) and exit with 'OK' once. Otherwise the user name will not be send.

There is a script available to do this at login-time. Please ask your dealer for the 'Kyocera MultiDriver' login script.

### Job Retention (Auftragsbearbeitung)

You should not use KyoControl and Job Retention together because the print jobs will be stored centrally on the KyoControl server and should not be stored locally in the printer.

If you have problems using copy collate try following settings:

Tab: Properties

Extended Settings -> RAM disk Mode 1 or 2

Device Settings -> Collate: Printer

Device Settings -> Job Retention: Lock

### Limitations

User Name and Job Name are limited to 30 characters.

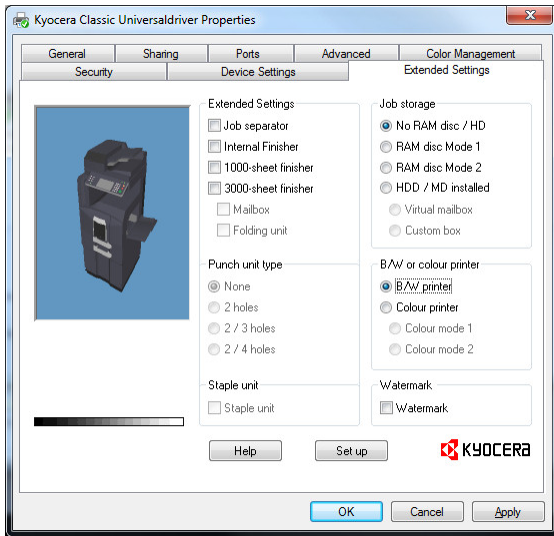
### Attention

There is an issue in Server / Client environment; if you install and configure the driver on a print-server for sharing, maybe the login-name of the server-administrator will be pushed to the clients.

To avoid this you must activate 'JobRetention'-tab and delete the user name from the edit-box. Do not change anything afterwards, click OK immediately after deleting the user name.

This problem only occurs if you changed any 'Printing Properties' on server side.

## Overview Extended Settings



### Extended Settings

The Finisher options are divided in Extended Settings, Punch Unit Type, and Staple Unit.

In this section the administrator can decide which options of the Finisher should be available for the user by the print driver.

You can add the Punch Unit and/or Staple Unit if the unit is available.

Also you can decide not to select a Unit, even if the Unit is available, to avoid the user to use the features available by the specific Unit.



### Job Separator or Internal Finisher

You can add a Job Separator or an Internal Finisher.

The Internal Finisher also supports stapling. You can decide if the user can use the Staple Unit or not.



### 1000 Sheet Finisher

You can add a 1000 Sheet Finisher and in addition a Job Separator, if your model supports this combination.

This Finisher supports stapling. You can decide if the user can use the Staple Unit or not.

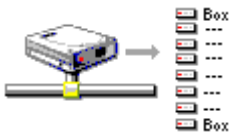
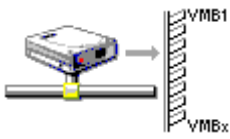


### 3000 Sheet Finisher

You can add a 3000 Sheet Finisher and in addition a Job Separator, if your model supports this combination.

Also you can add a Mailbox Unit, a Booklet Unit, a Punch Unit and a Staple Unit, if they are available and the user should be able to use them. If you add a Punch Unit you must select how much holes the Punch Unit supports; 2 holes, 2/3 holes (America), or 2/4 holes (Europe).

## Job Storage



## RAM Disk / Hard Disk

RAM Disk Mode 1 models support (e.g.):  
FS-1800 / 1900, FS-3800,  
FS-C5016 / C5020 / C5025 / C5030  
KM-3035 / 4035 / 5035

RAM Disk Mode 2 models support (e.g.):  
FS-2020D / 3920DN  
FS-C5100DN / C5200DN

HD models support (e.g.):  
FS-4020DN  
FS-C5300DN

VMB models support (e.g.):  
FS-1800 / 1900 / 3800, FS-C5016 / C5020 / C5025 / C5030  
KM-2540 / 3040, KM-3035 / 4035 / 5035, KM-6030 / 8030  
KM-C2520 / C3225 / C3232, KM-C2525E / C3225E / C3232E  
/ C4035E

User Box models supported (e.g.):  
KM-3050 / 4050 / 5050  
KM-2560 / 3060  
TASKalfa 250ci / 300ci / 400ci / 500ci

## B/W or Colour Printer (Colour models only)



In this section you can select B/W or Colour printing to allow the user to print documents in colour or not.

If you select Colour Printer you have three choices:

No Colour Mode selected This setting is good for old colour models.

Colour Mode 1 This setting is valid for following printer series: FS-C50xx and KM-C2520 / C3225 / C3232

Colour Mode 2 This setting is valid for following printer series: FS-C5x00, KM-C2525E / C3225E / C3232E / C4035E, TASKalfa 250ci / 300ci / 400ci / 500ci.

## Watermark

In this section you can select whether the user can use the Watermark feature or not. This feature is printer model independent.